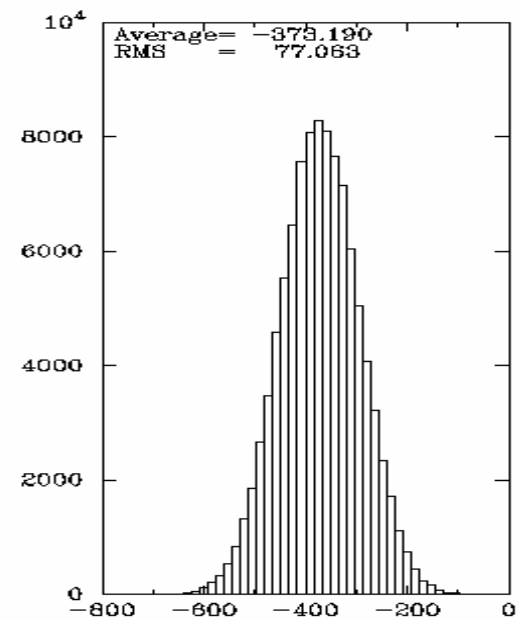
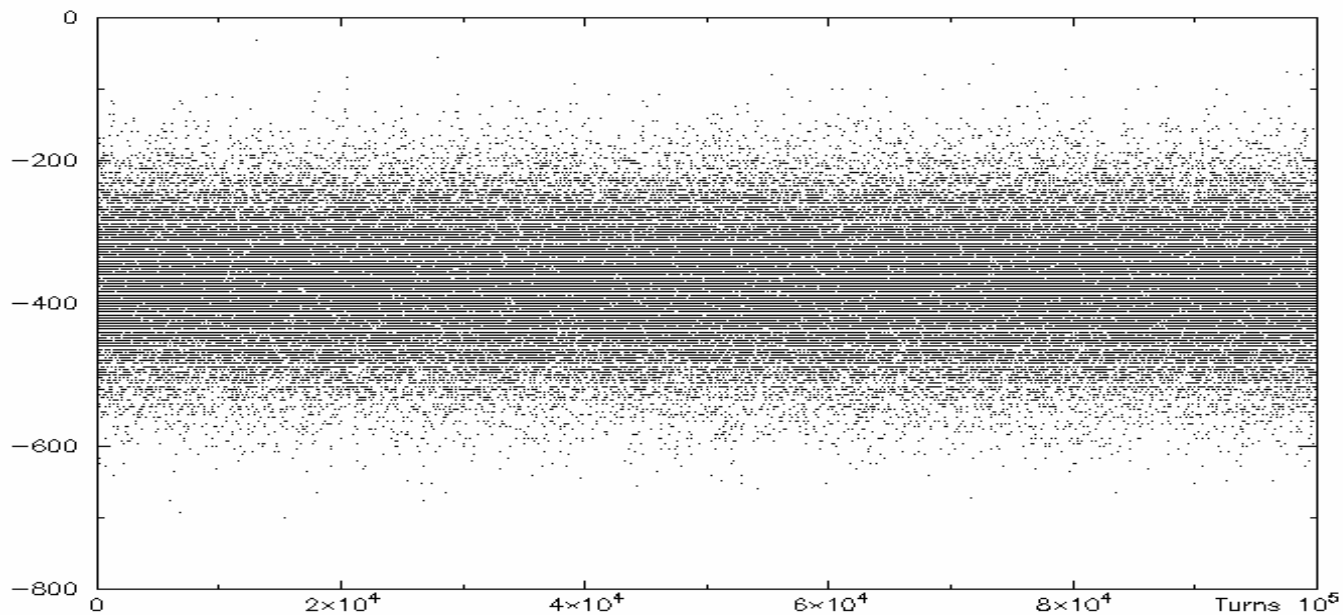
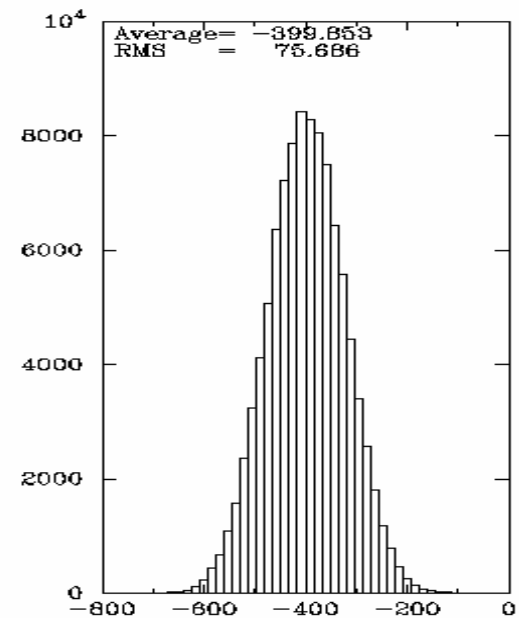
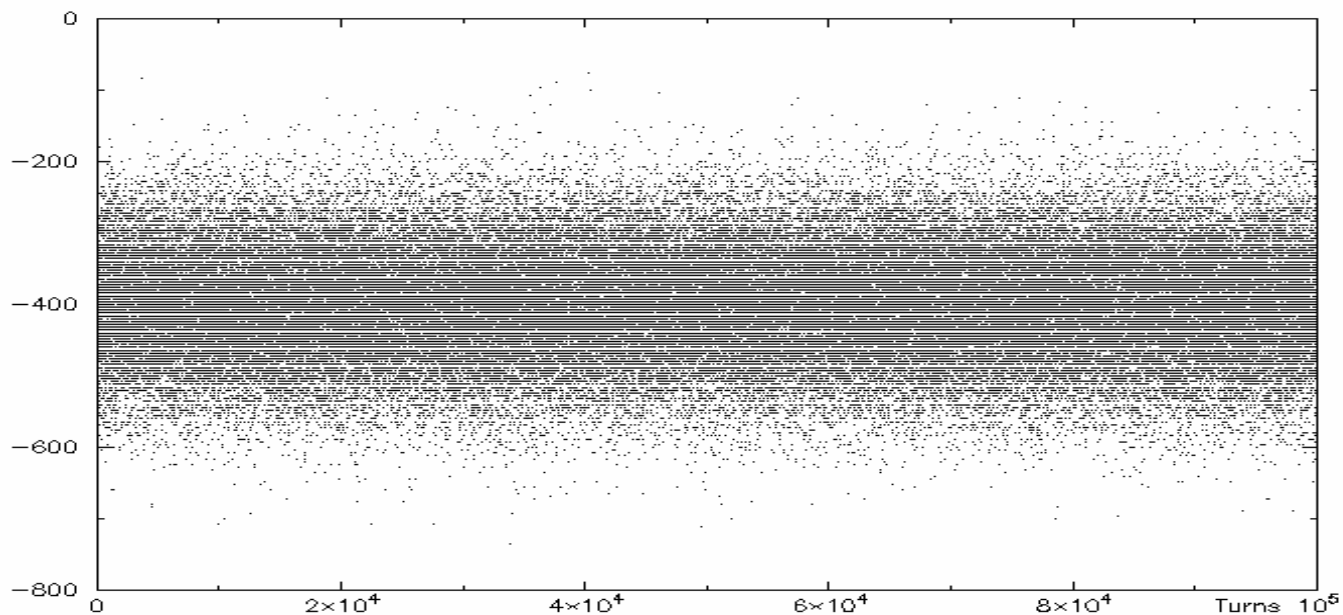


BPM\_SUMPEDS.DAT 10-26-2005 10:12:22



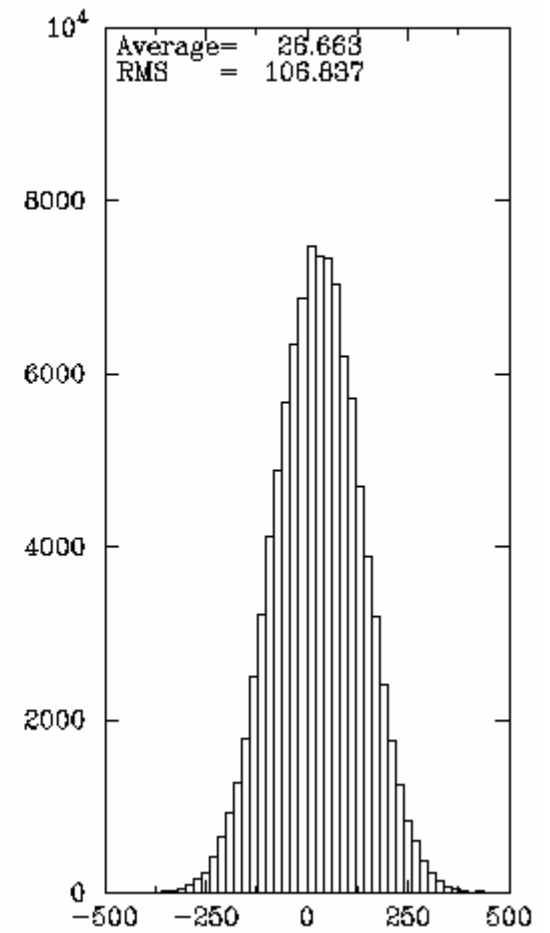
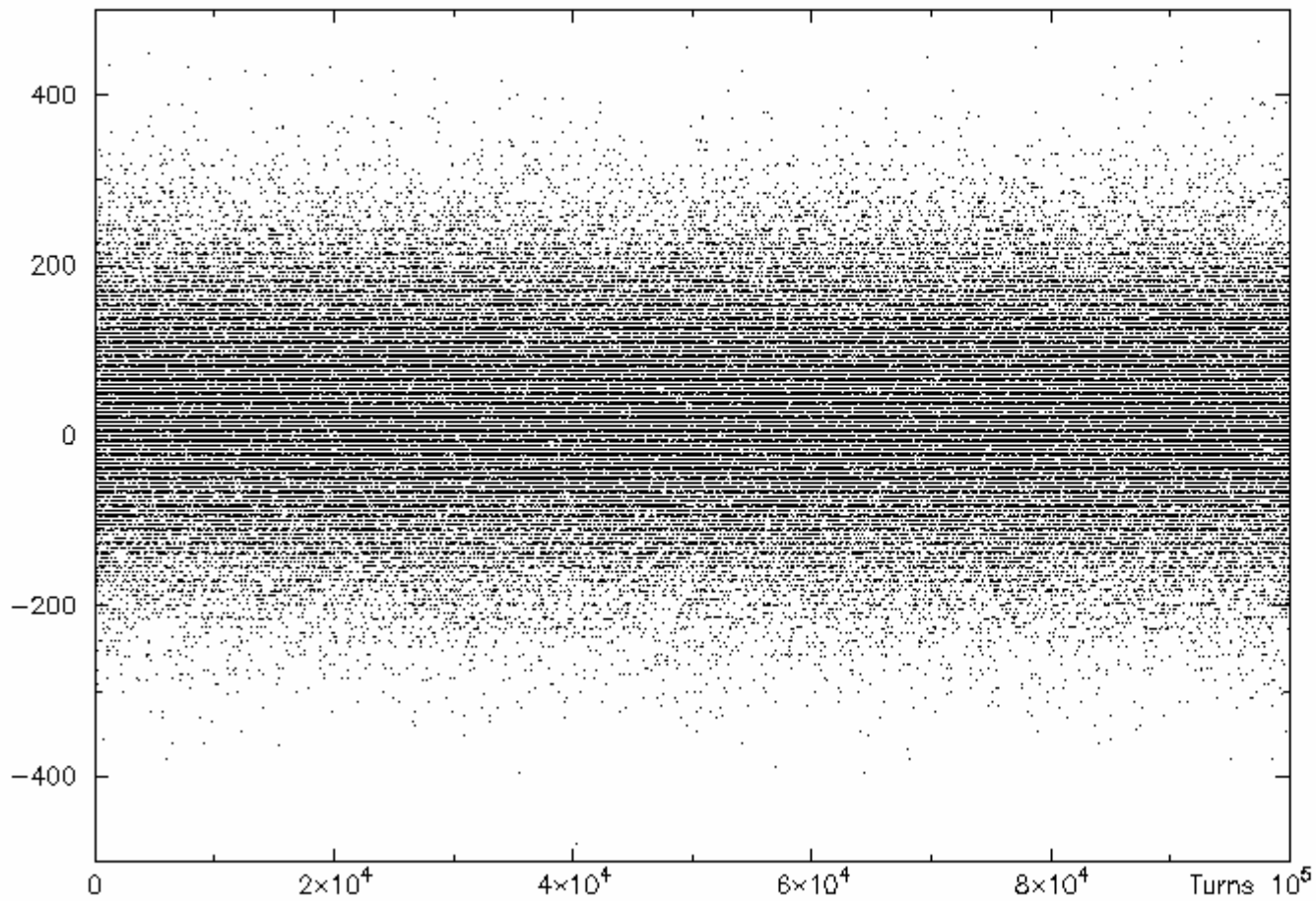
Pedestal sums: channel 0+2+4+6 (above) and channel 1+3+5+7 (below)

BPM\_SUMPEDS.DAT 10-26-2005 10:15:35

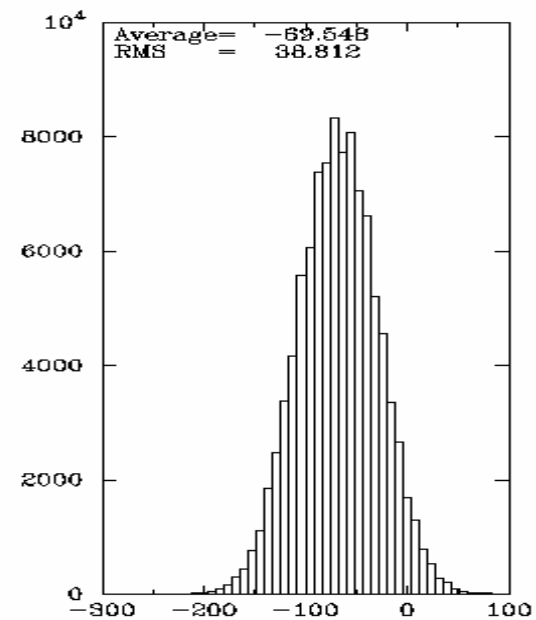
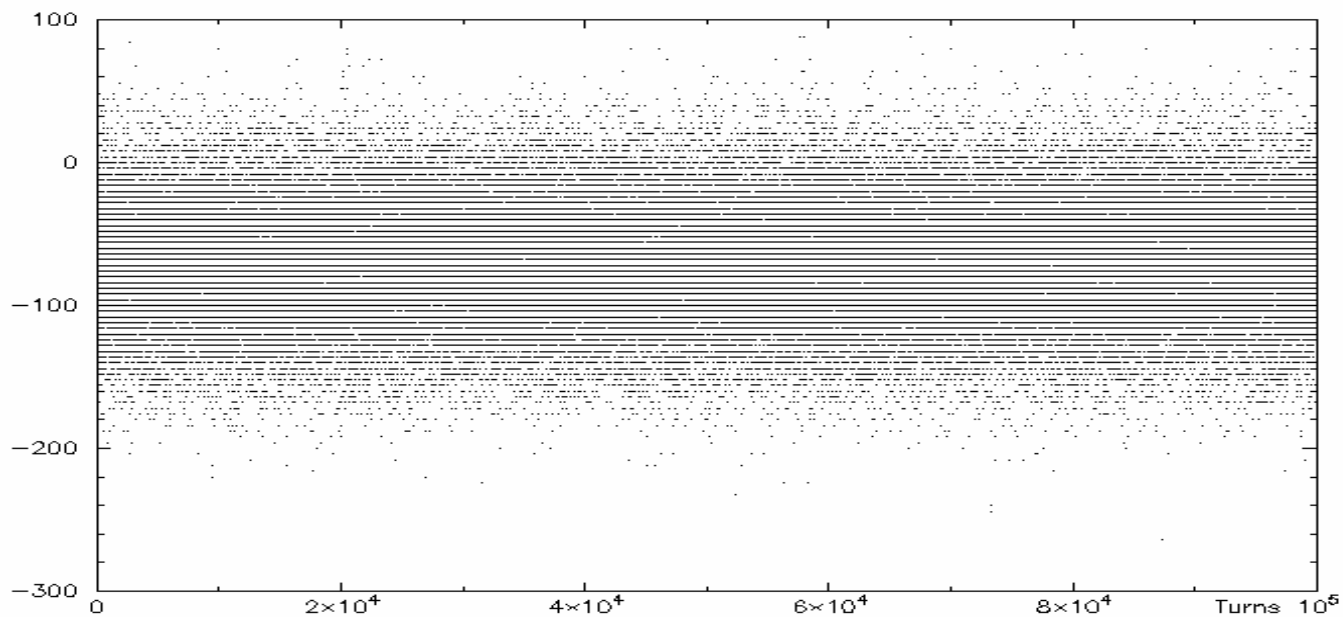


Difference of pedestal sums:  
sum of channels 0,2,4,6 – sum of channels 1,3,5,7

BPM\_SUMPEDS.DAT 10-26-2005 10:44:04

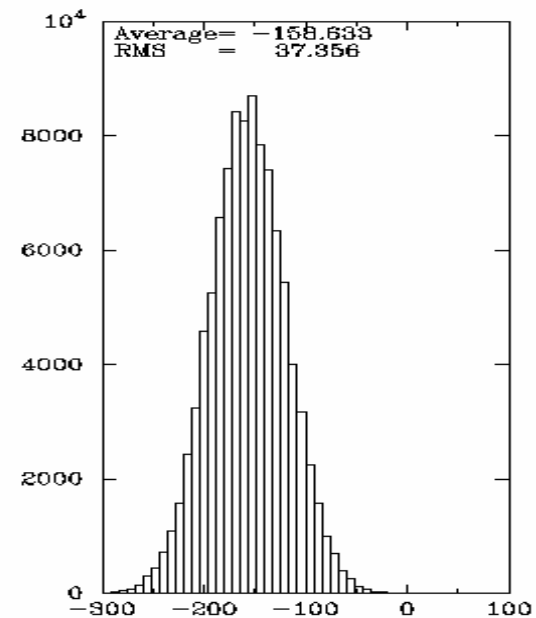
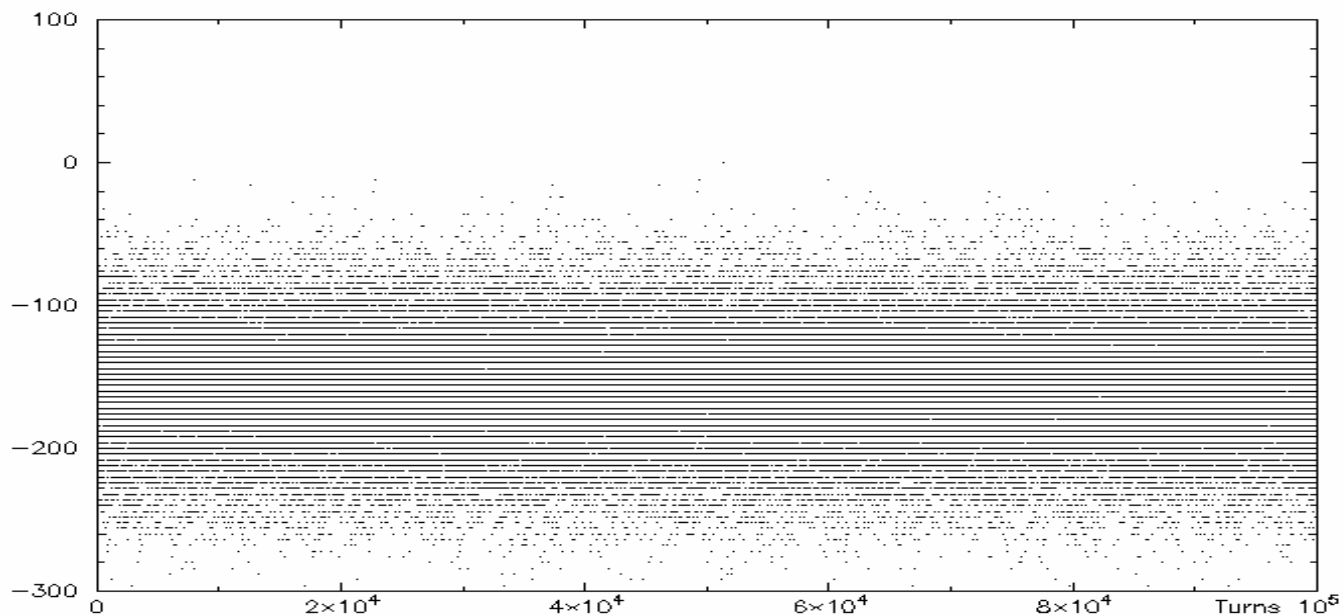


BPM\_CHPEDS.DAT 10-26-2005 10:20:37

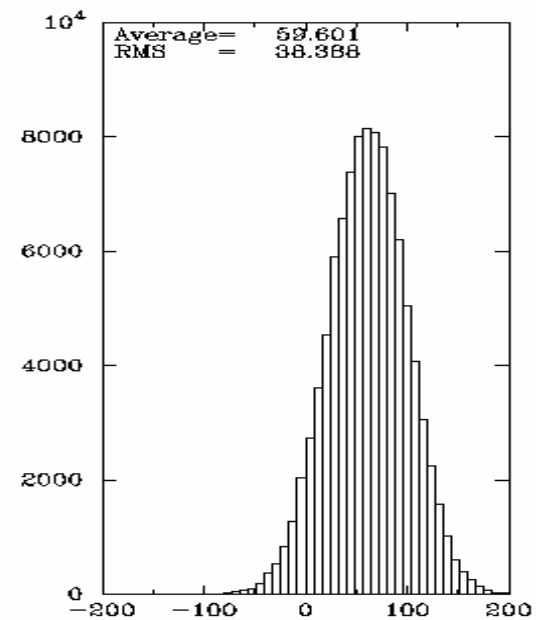
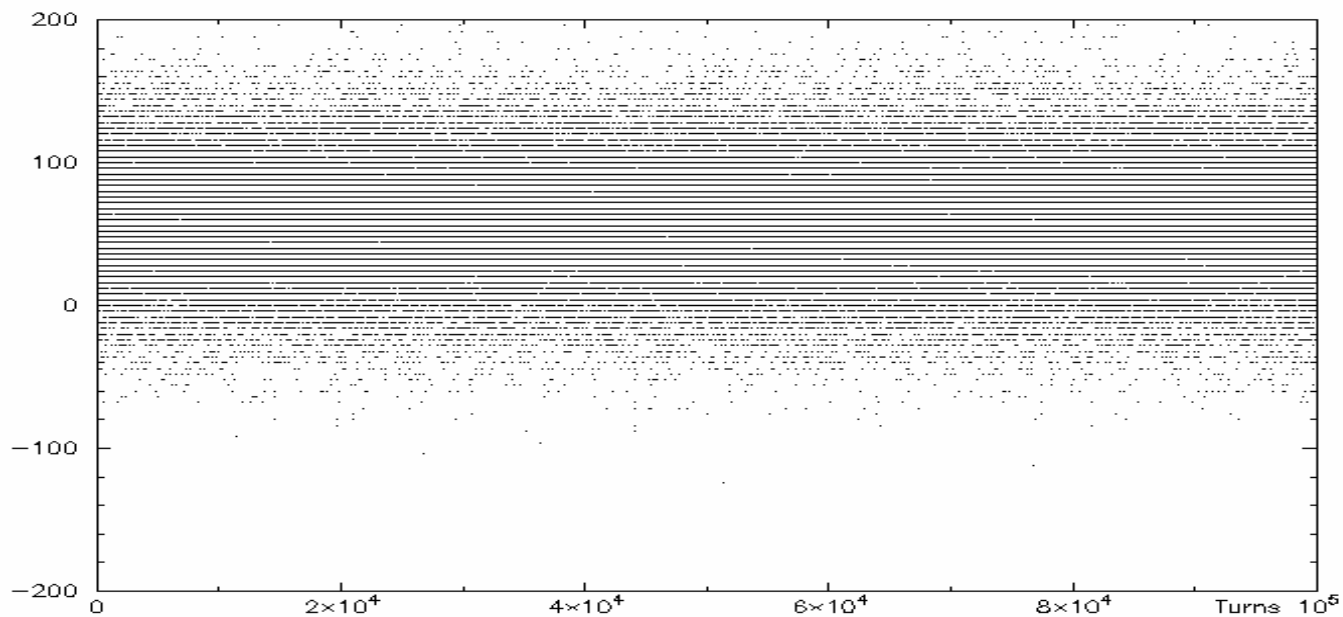


Pedestal values for channel 0 (above) and channel 1 (below)

BPM\_CHPEDS.DAT 10-26-2005 10:23:03

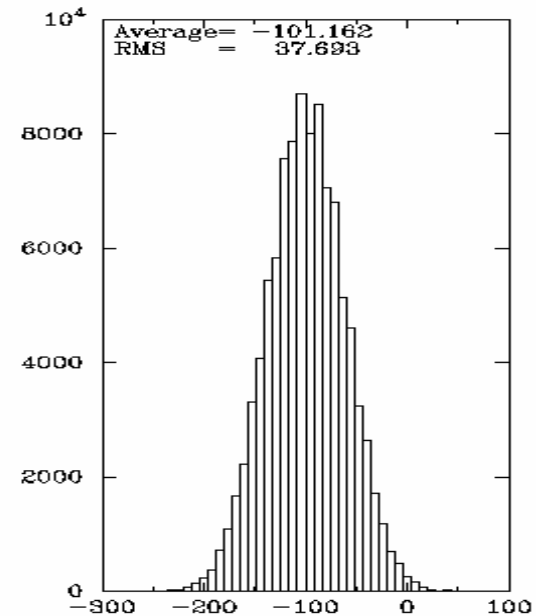
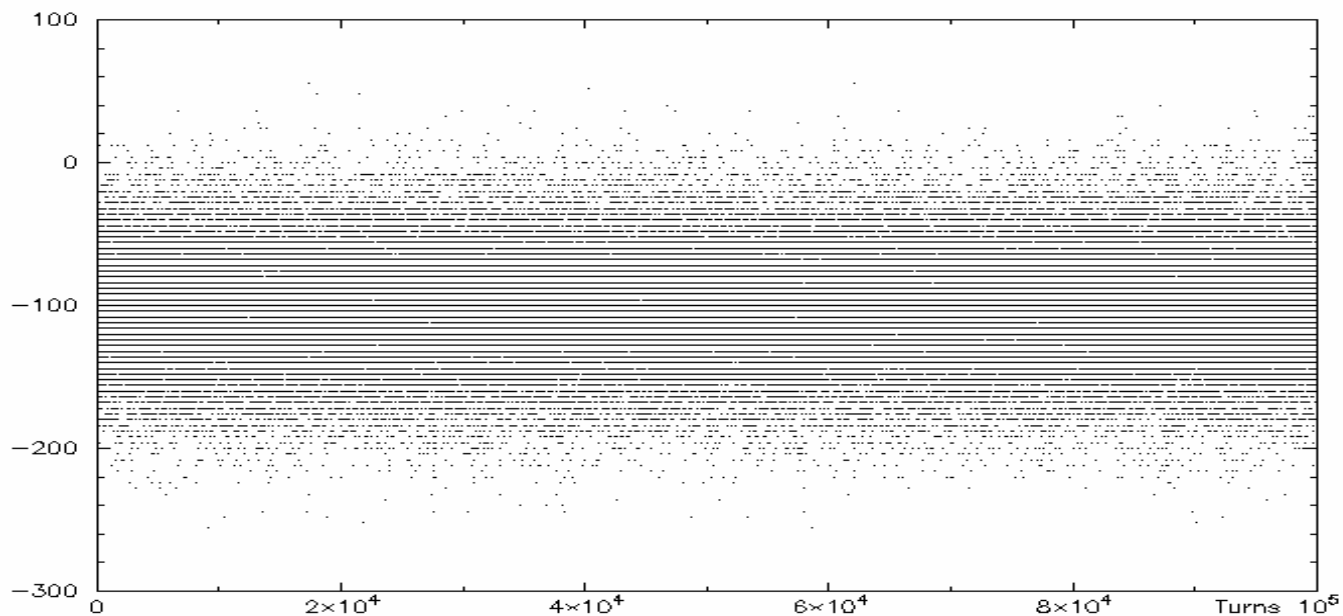


BPM\_CHPEDS.DAT 10-26-2005 10:25:17

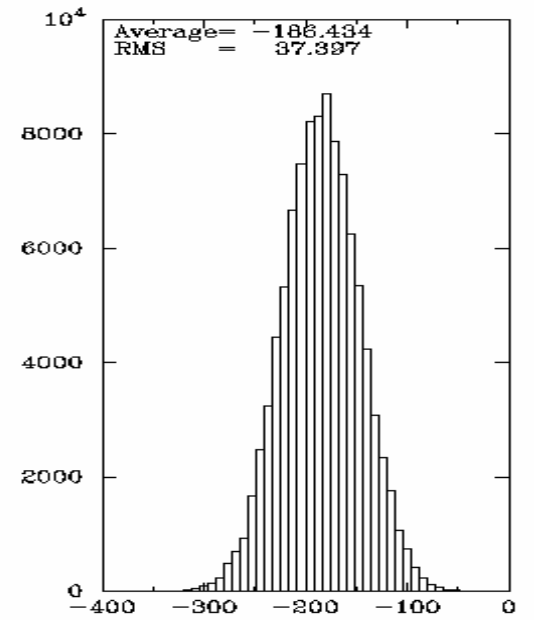
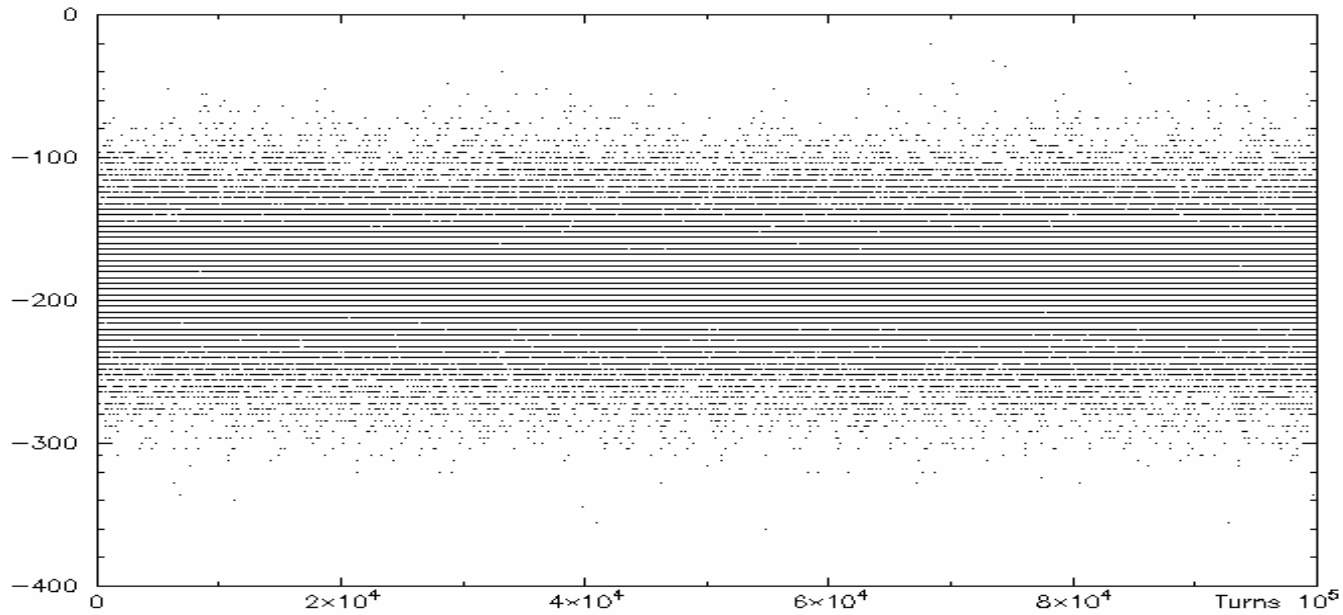


Pedestal values for channel 2 (above) and channel 3 (below)

BPM\_CHPEDS.DAT 10-26-2005 10:27:05

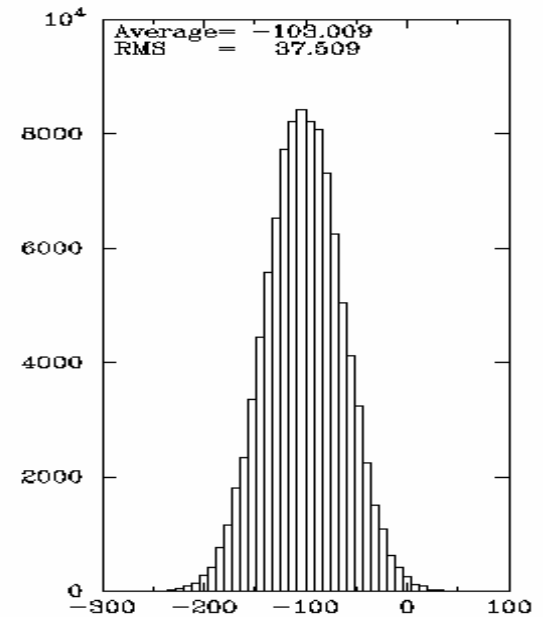
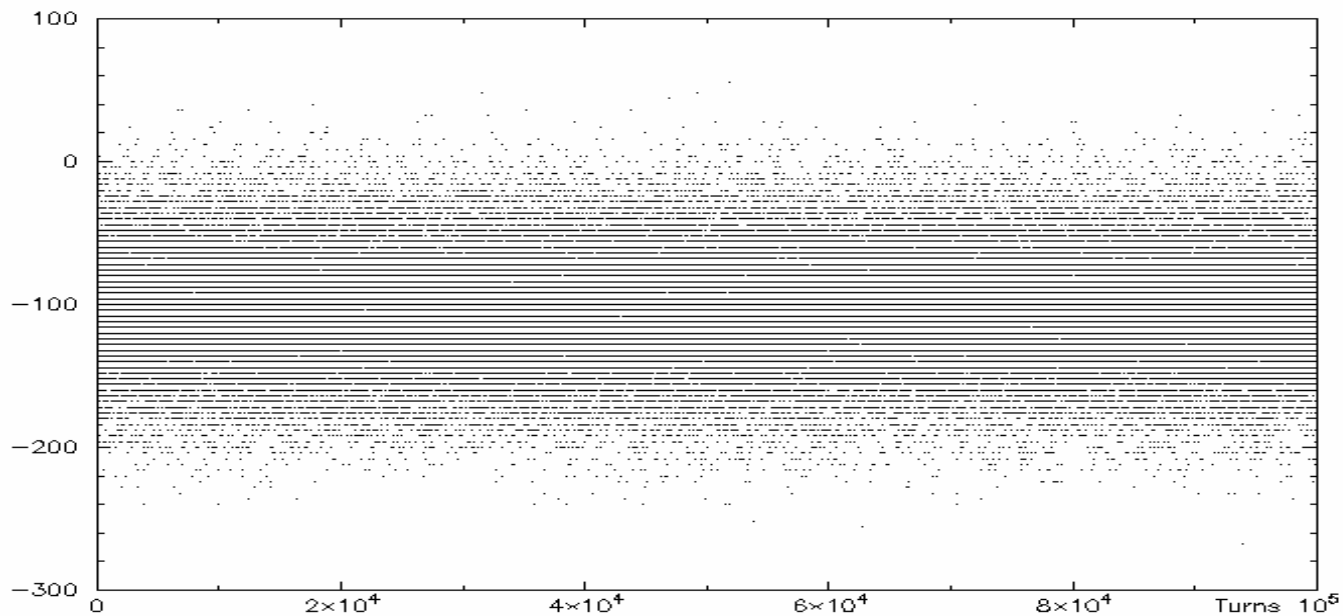


BPM\_CHPEDS.DAT 10-26-2005 10:31:50

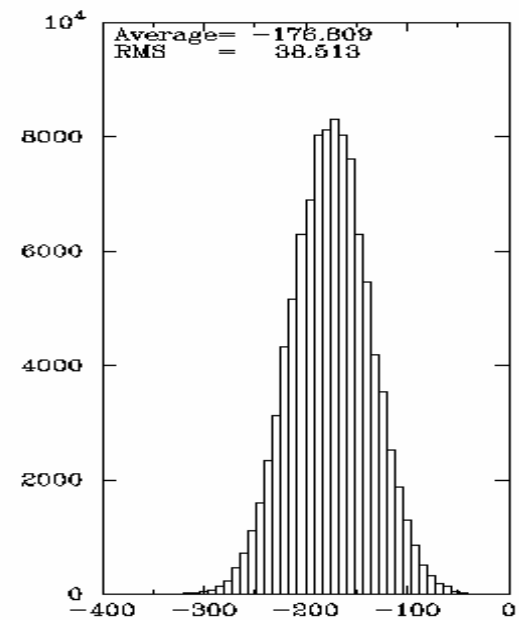
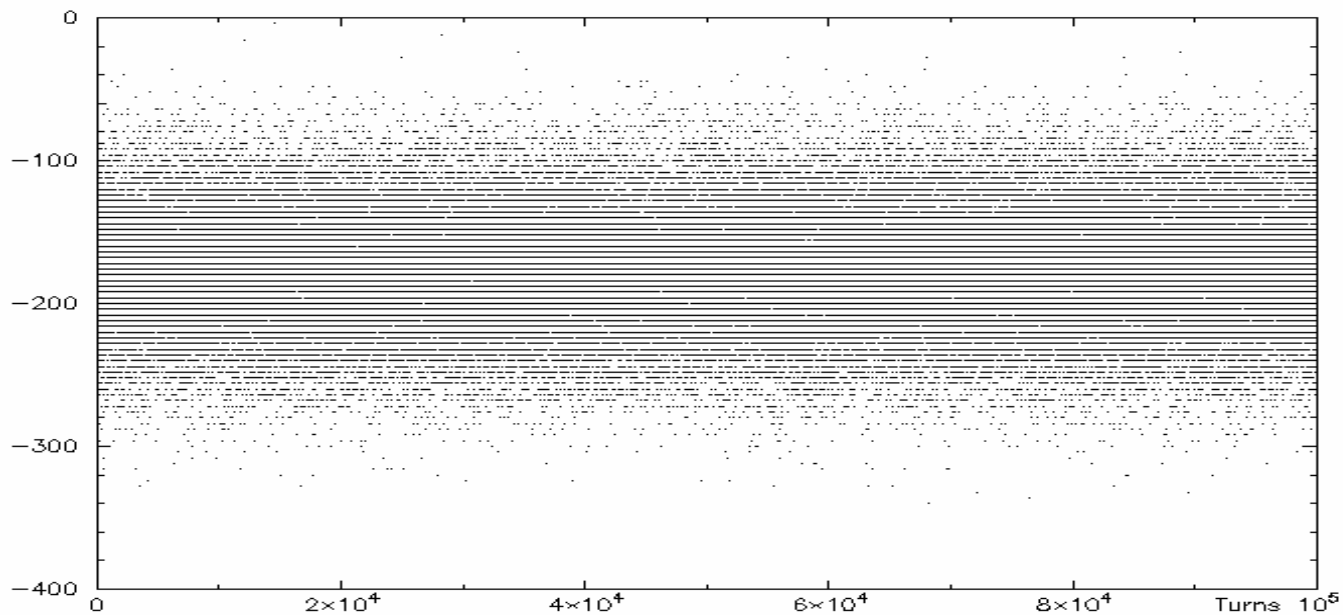


Pedestal values for channel 4 (above) and channel 5 (below)

BPM\_CHPEDS.DAT 10-26-2005 10:33:07

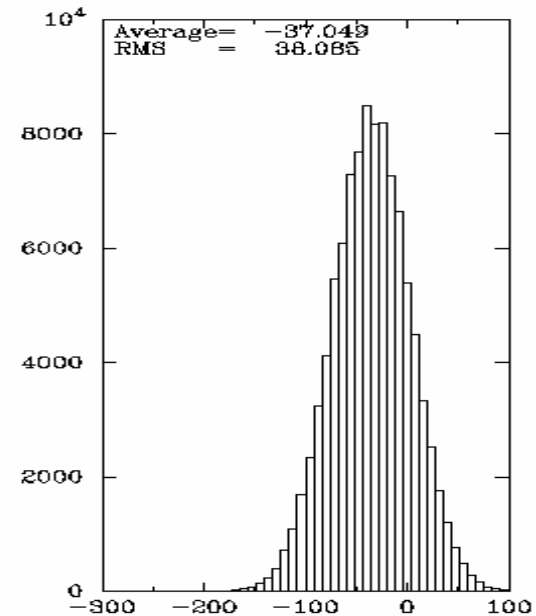
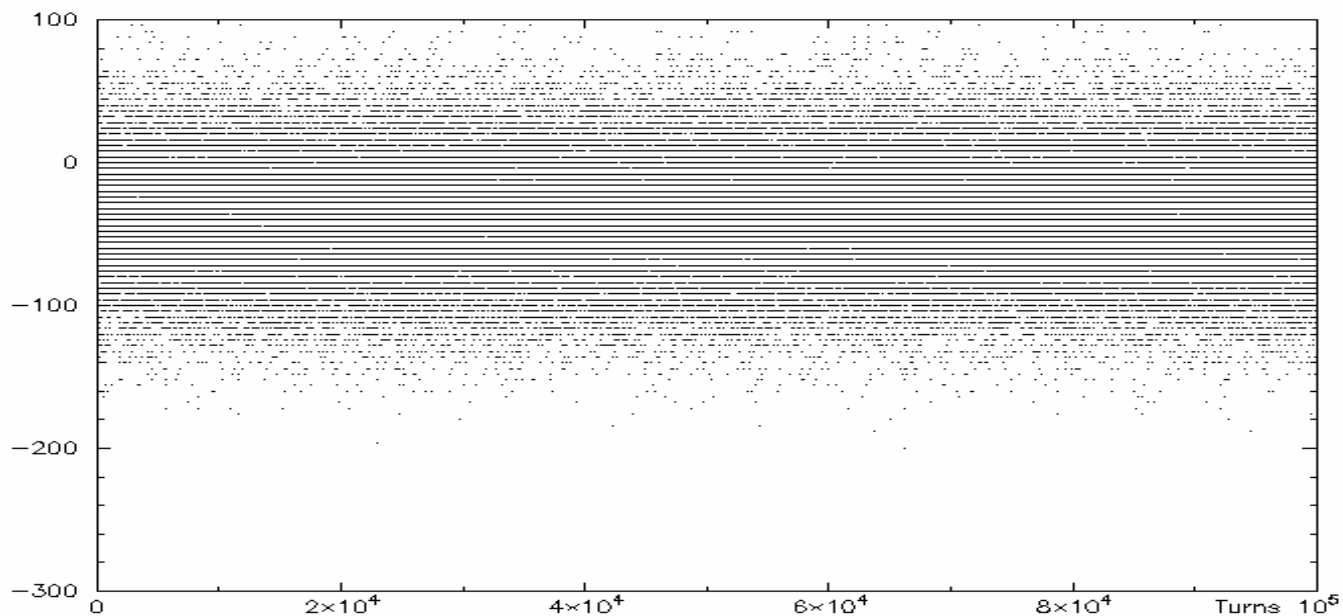


BPM\_CHPEDS.DAT 10-26-2005 10:34:18



Pedestal values for channel 6 (above) and channel 7 (below)

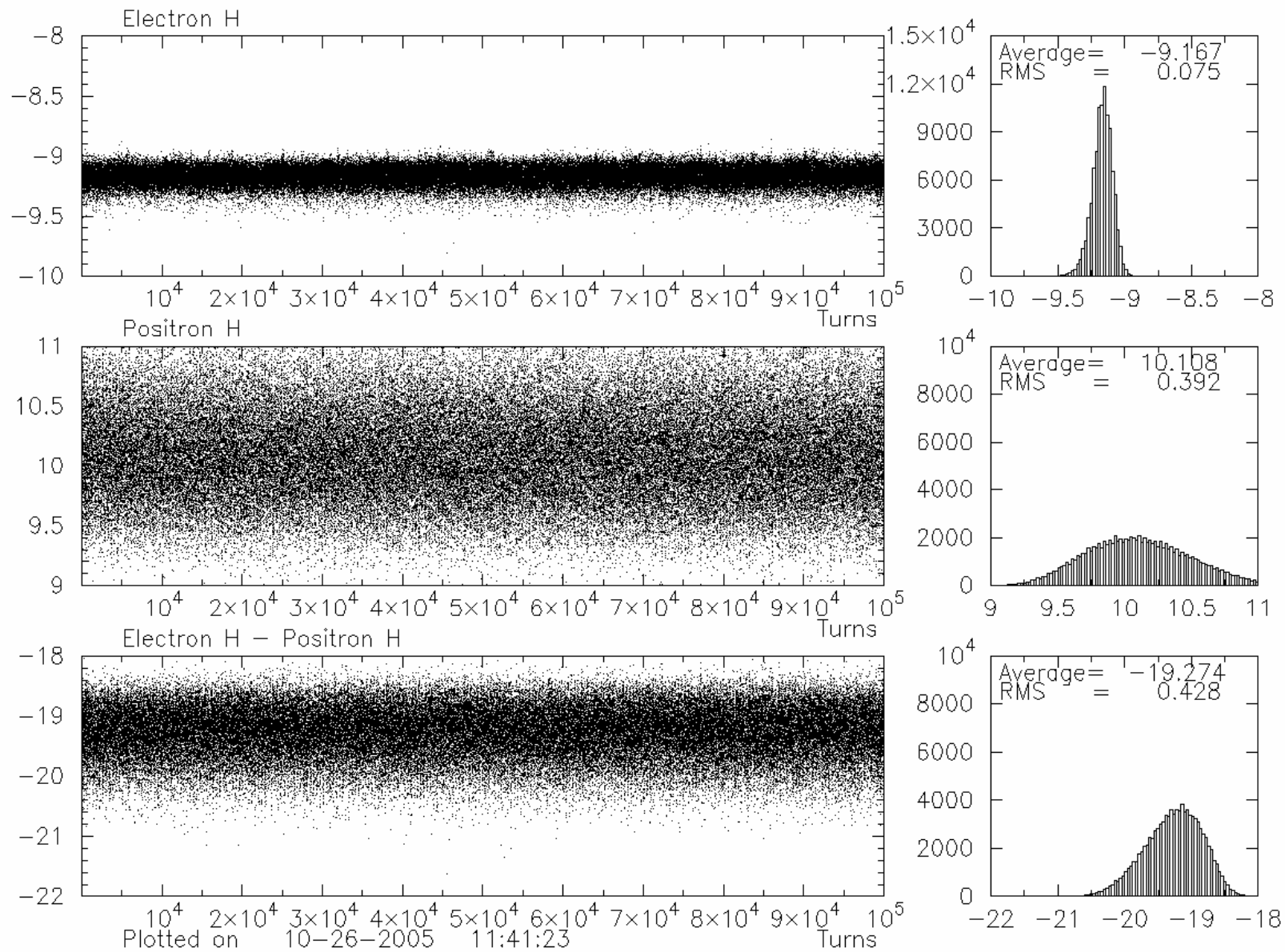
BPM\_CHPEDS.DAT 10-26-2005 10:35:51



e- data from channels 0,2,4,6 and e+ data from channels 1,3,5,7

pedestal subtracted

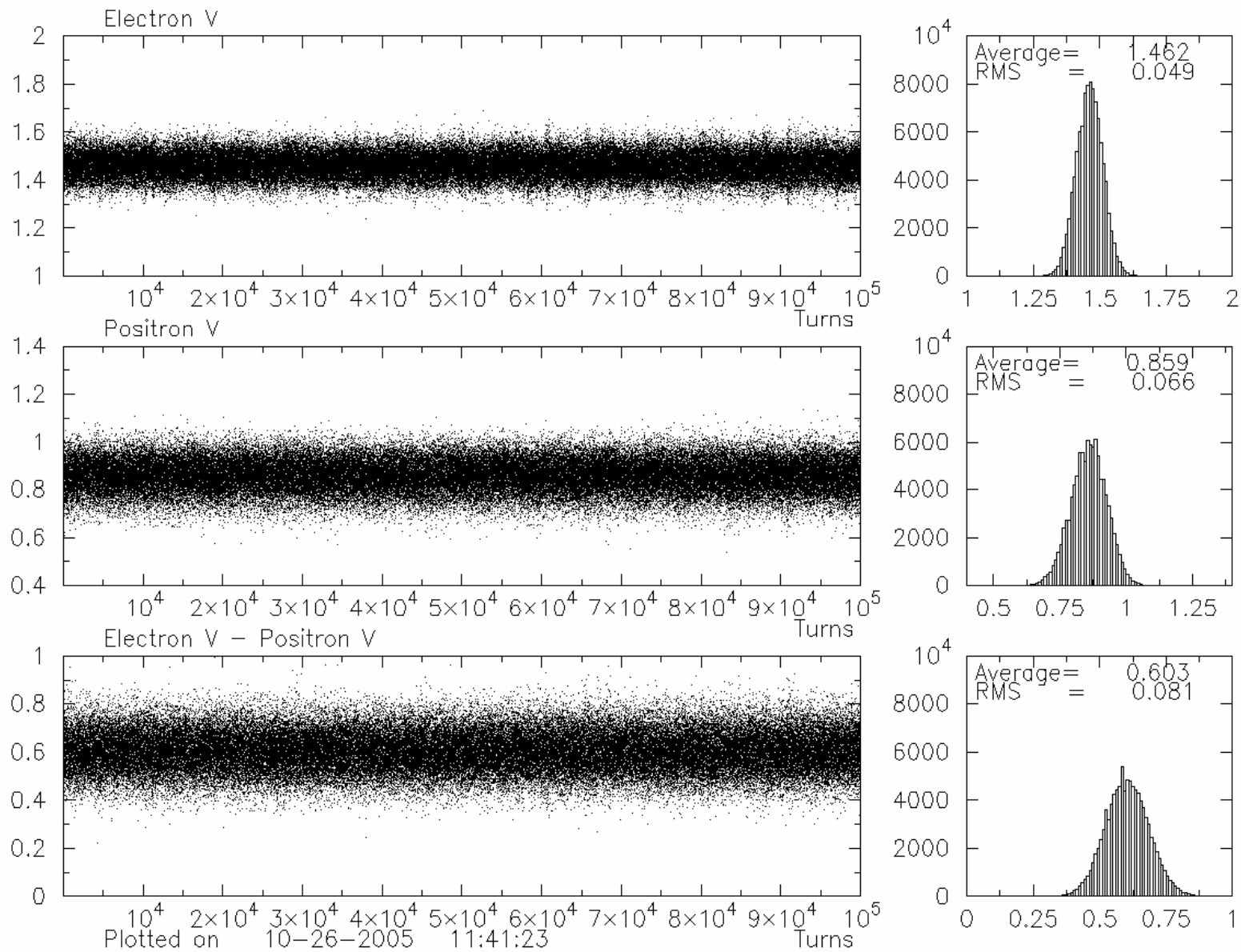
BPM 6W1



e- data from channels 0,2,4,6 and e+ data from channels 1,3,5,7

pedestal subtracted

BPM 6W1

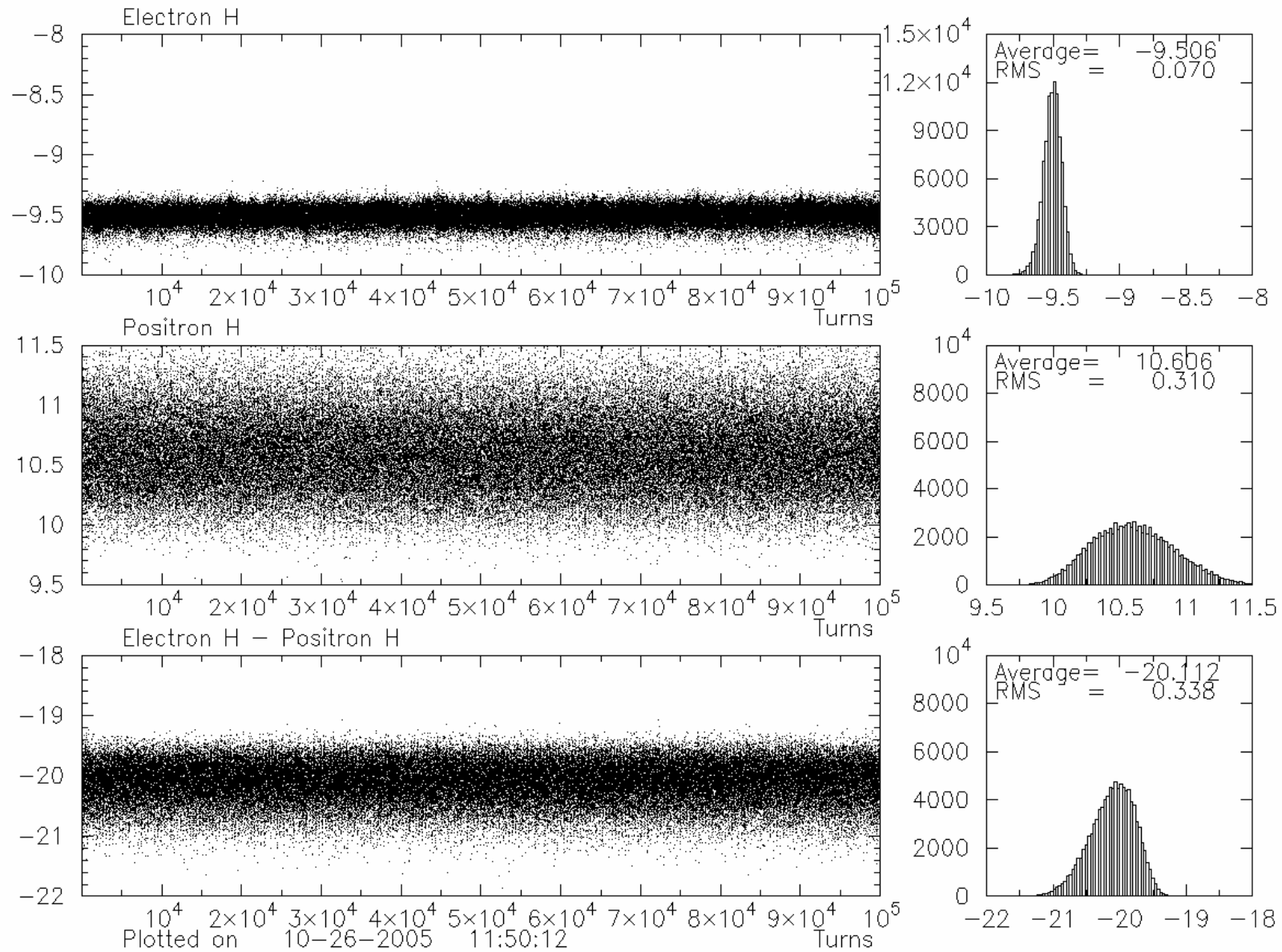




e- data from channels 1,3,5,7 and e+ data from channels 0,2,4,6

pedestal subtracted

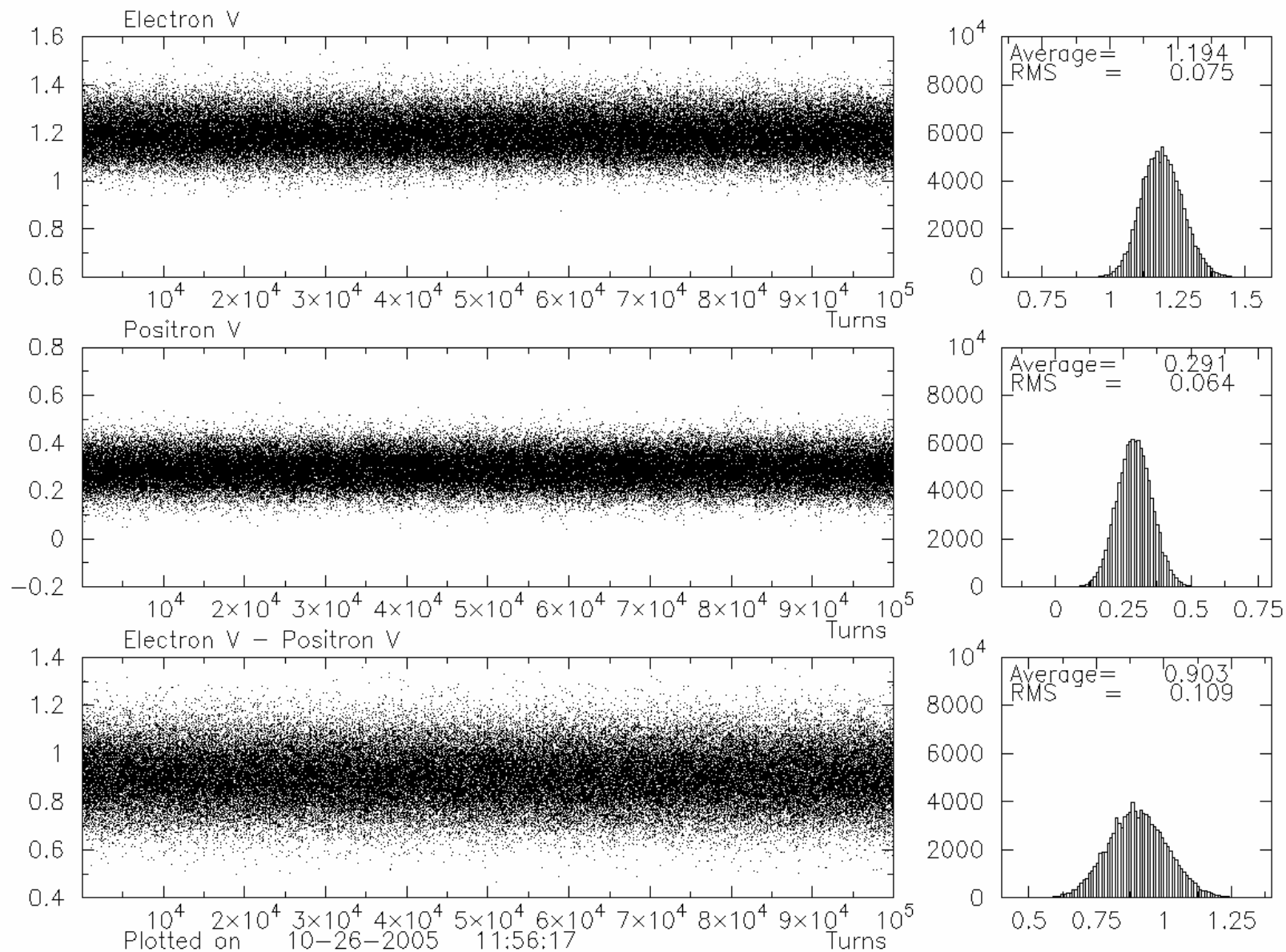
BPM 6W1



e- data from channels 1,3,5,7 and e+ data from channels 0,2,4,6

pedestal subtracted

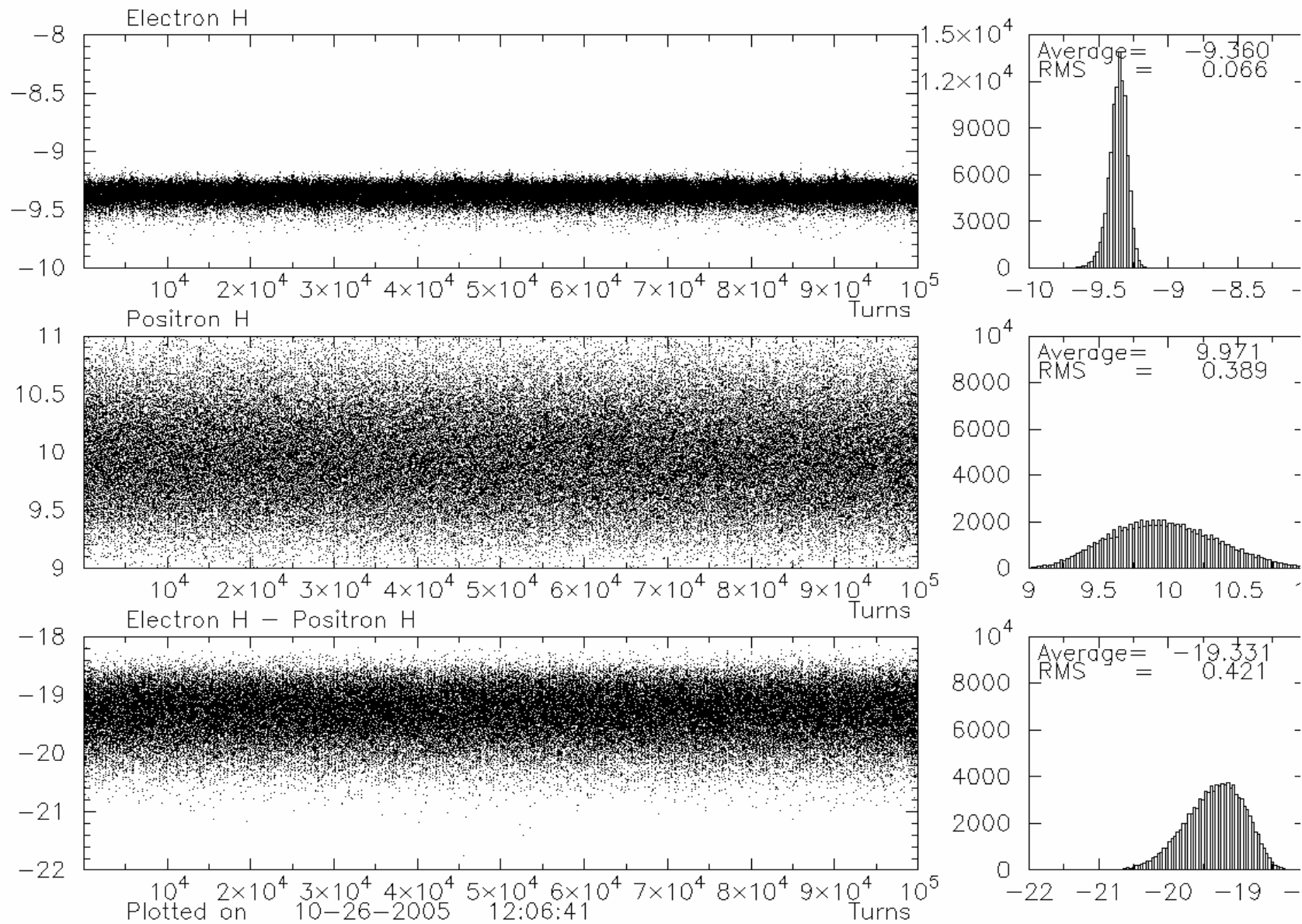
BPM 6W1



e- data from channels 0,2,4,6 and e+ data from channels 1,3,5,7

### NO pedestal subtraction

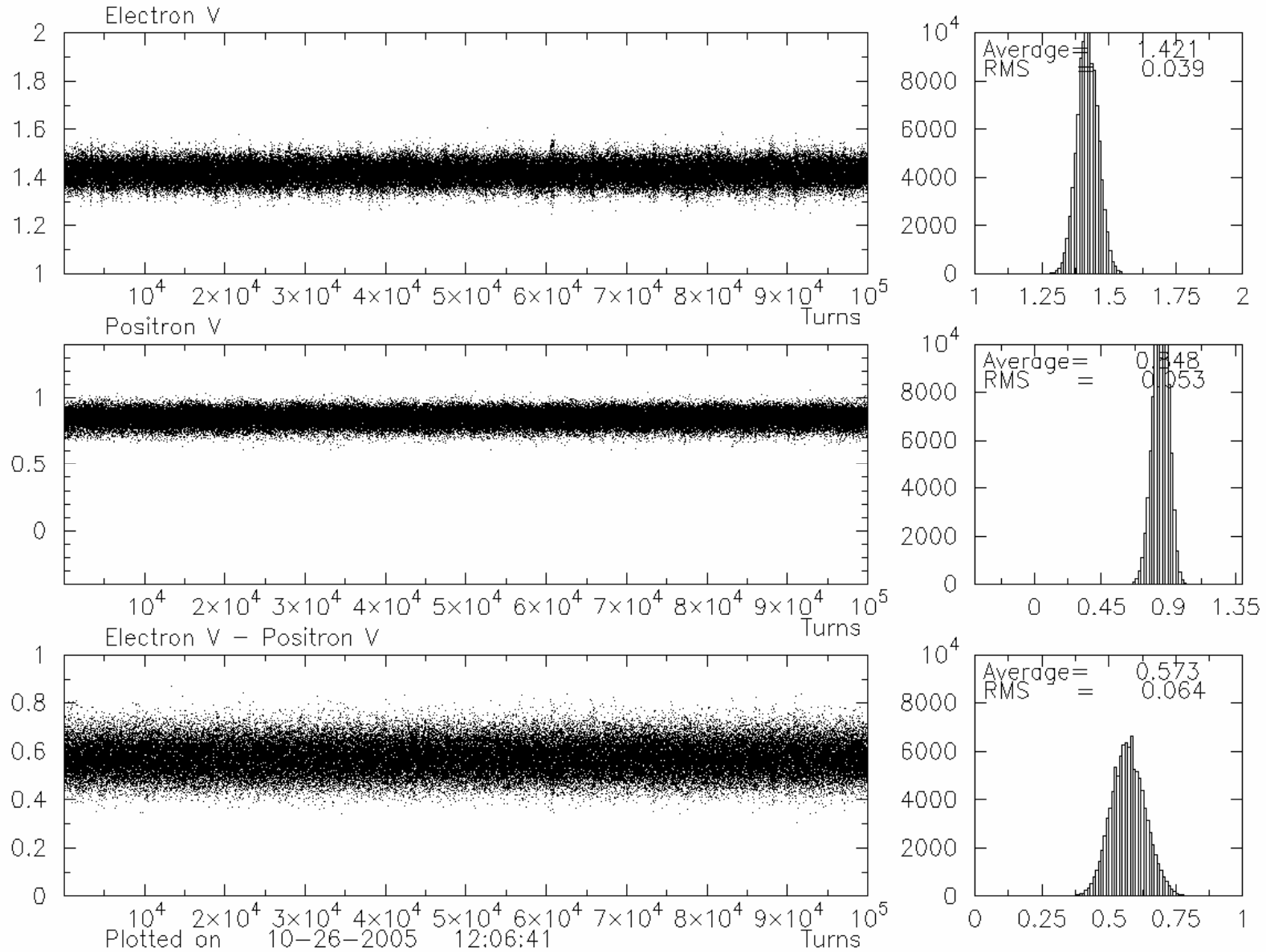
BPM 6W1



e- data from channels 0,2,4,6 and e+ data from channels 1,3,5,7

### NO pedestal subtraction

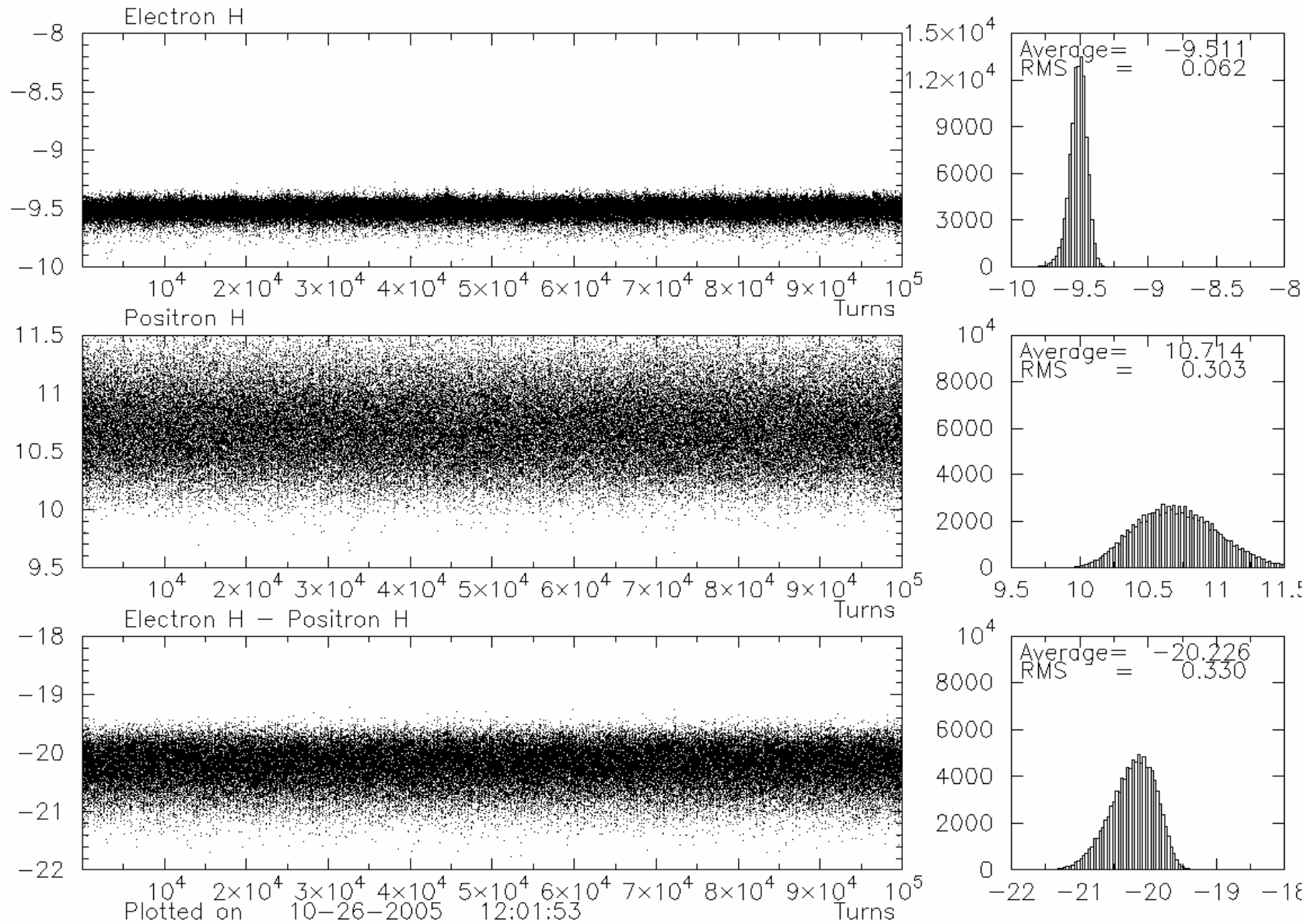
BPM 6W1



e- data from channels 1,3,5,7 and e+ data from channels 0,2,4,6

### NO pedestal subtraction

BPM 6W1



e- data from channels 1,3,5,7 and e+ data from channels 0,2,4,6

### NO pedestal subtraction

BPM 6W1

