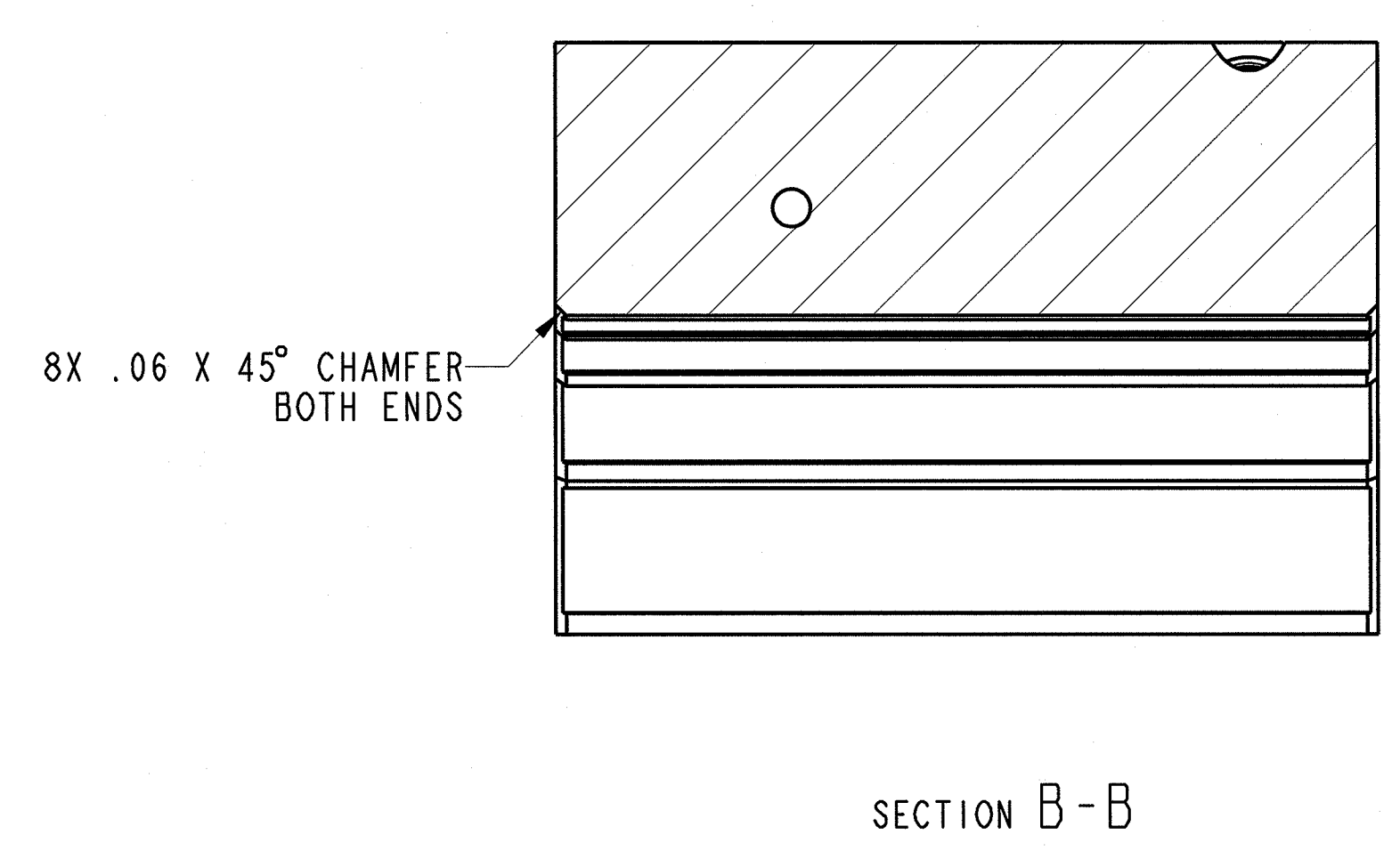
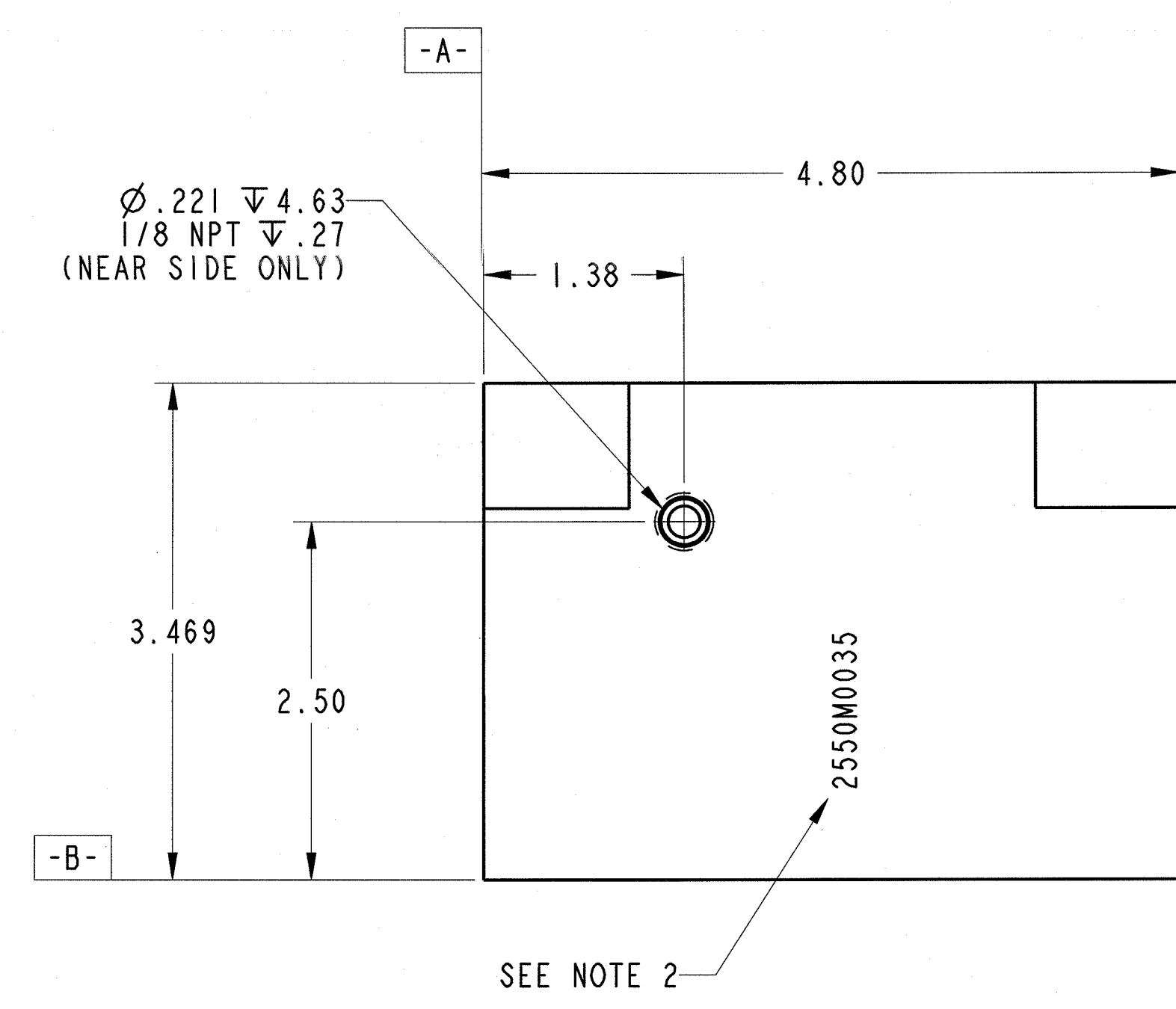
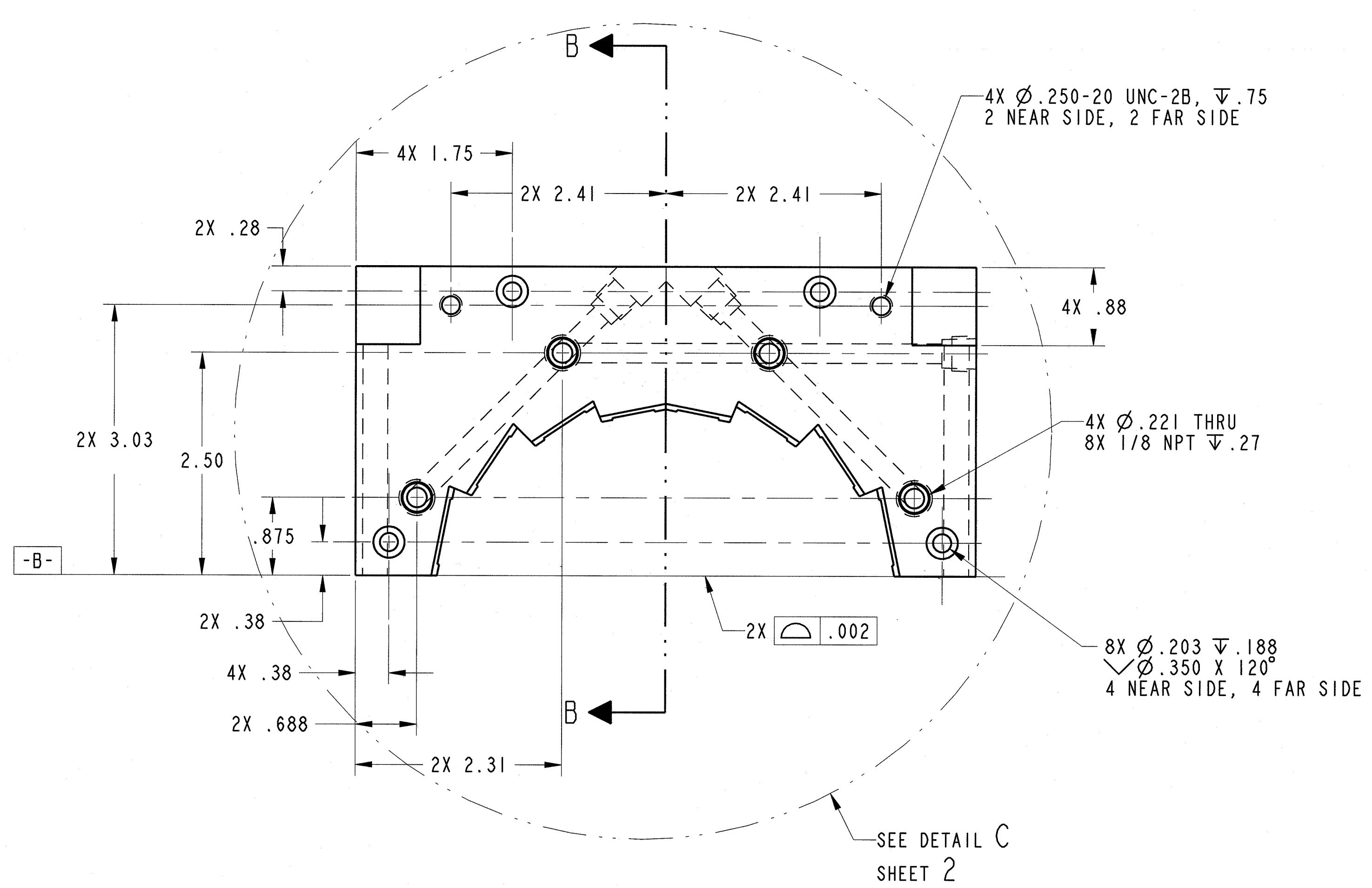
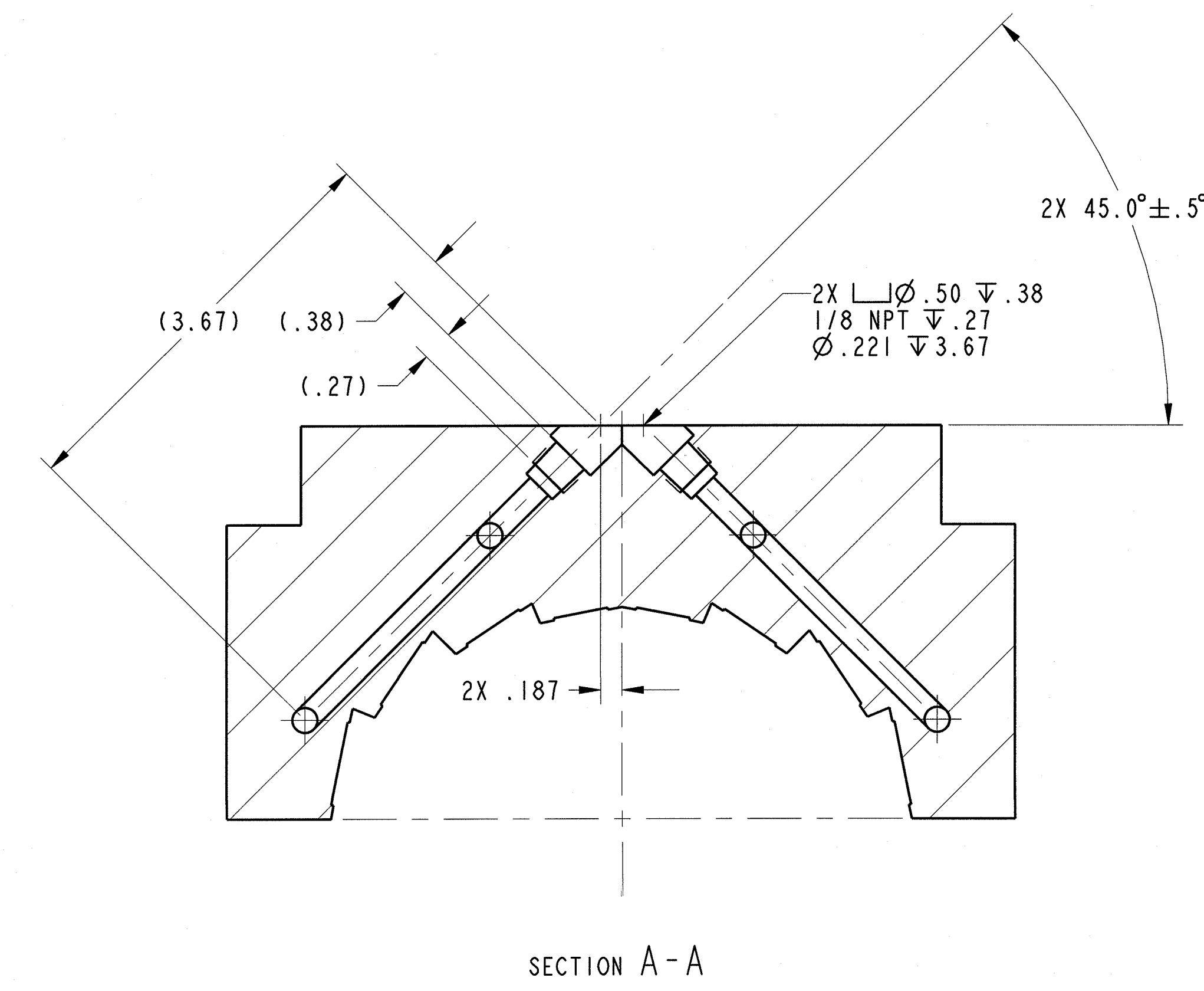
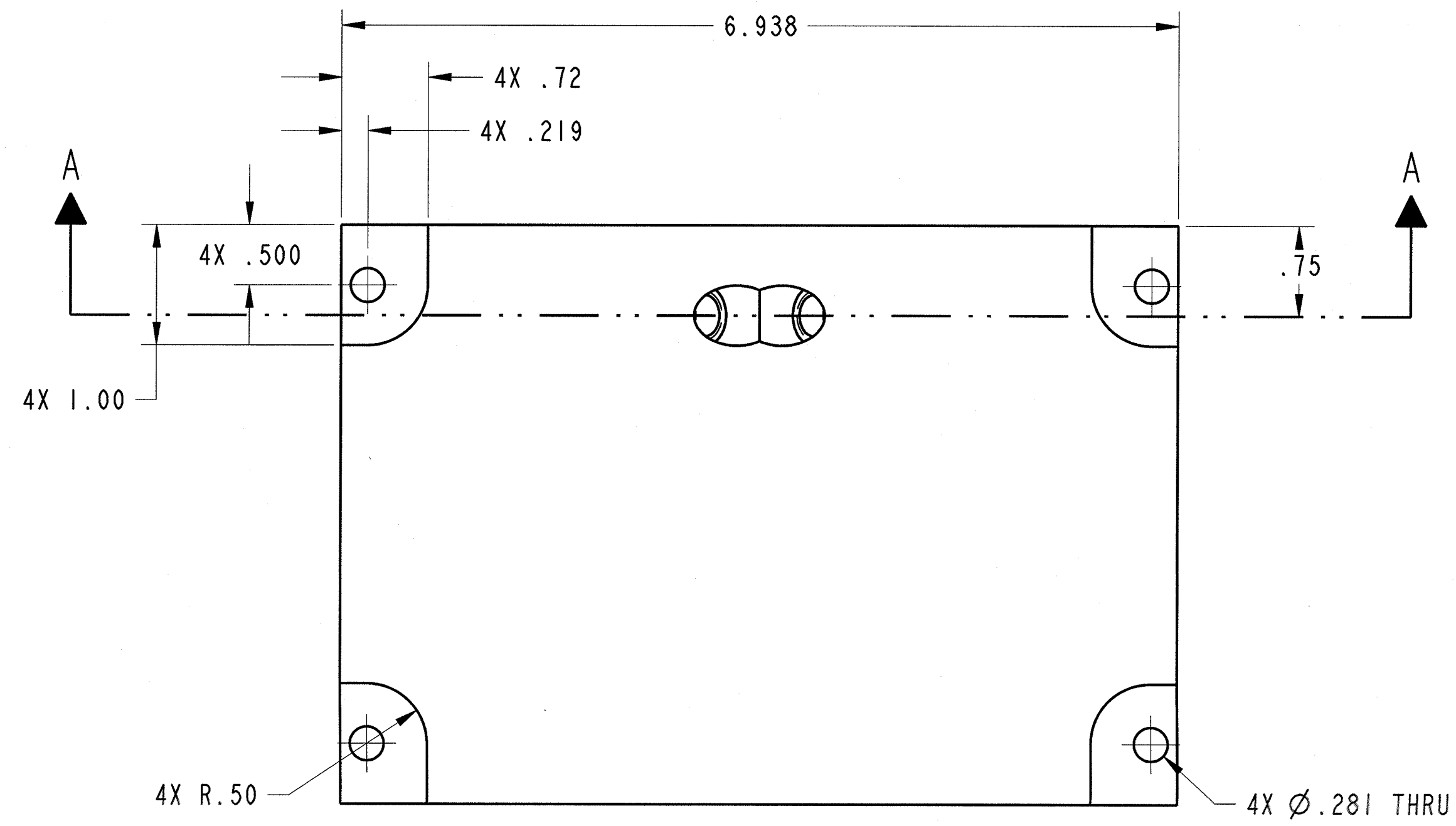


NOTES:

1. MATERIAL: ALUMINUM 6061-T6 PER ASTM B221.
2. VIBRO-ETCH PART, WITH DRAWING NUMBER, WITH MIN .12 HIGH CHARACTERS IN ACCORDANCE WITH MIL-STD-130. LOCATE AND ORIENT TEXT APPROXIMATELY AS SHOWN.
3. DIMENSIONS REPRESENTED IN POINT CHART (SHEET 2) ARE PRELIMINARY. FINAL DIMENSIONS TO BE ISSUED, BY BROOKHAVEN NATIONAL LABORATORY, WITH NEXT DRAWING REVISION.
4. DEPTH OF POCKET TO BE CUT TO REQUIRED THICKNESS BASED UPON VENDOR SELECTED BONDING AGENT

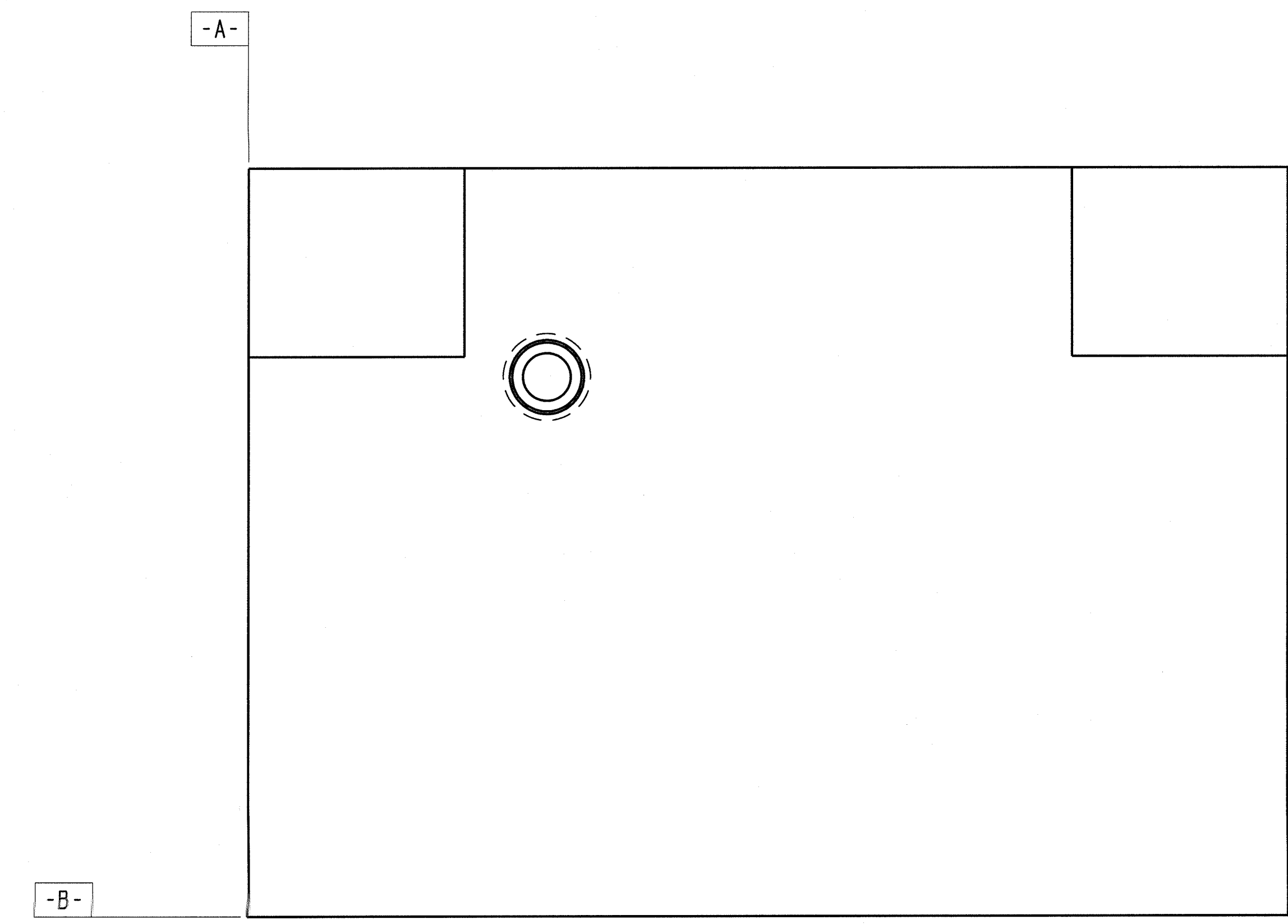
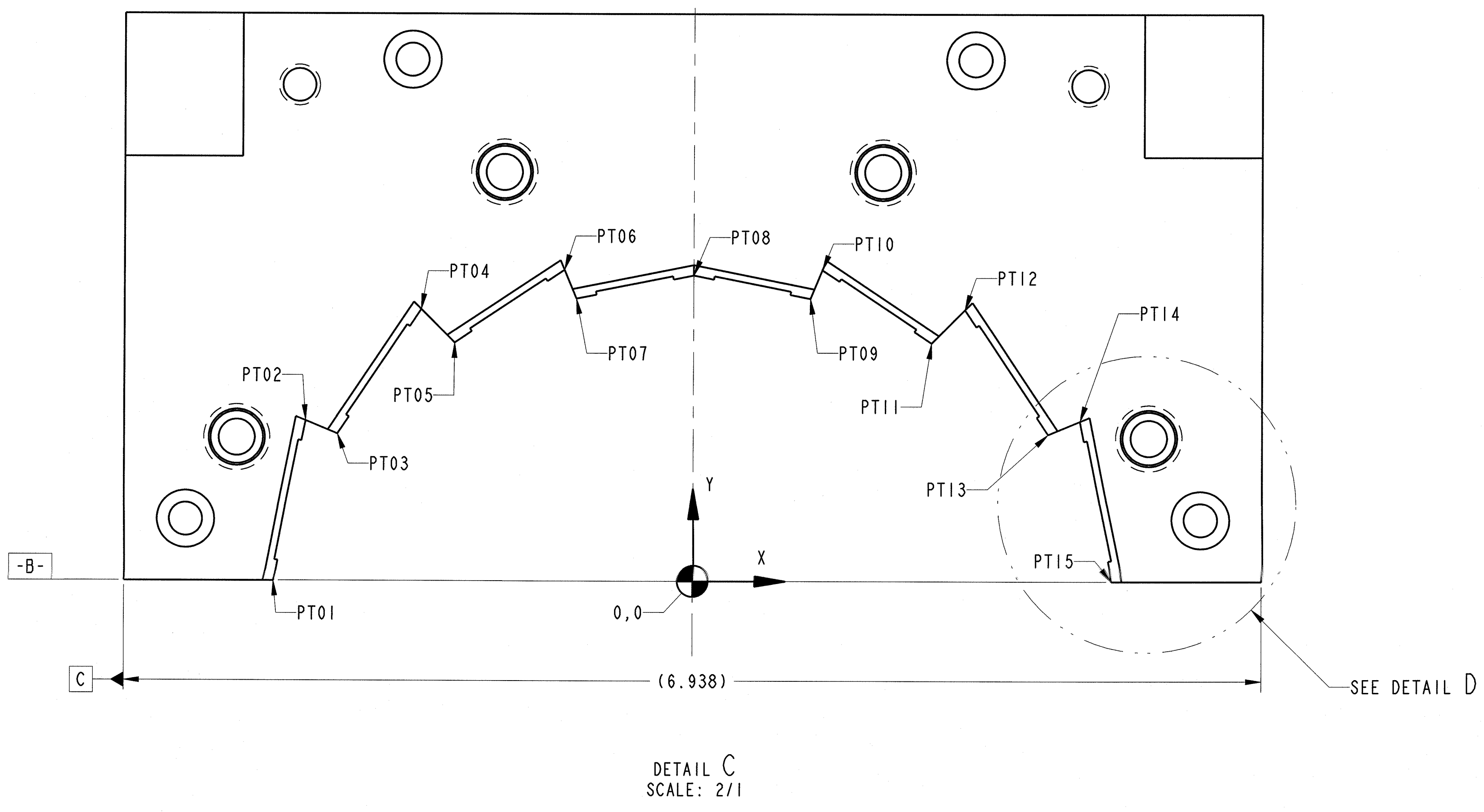
REVISION APPROVALS							
REV	ECN NO.	DESCRIPTION	DATE	BY	CHK	DES	SUPV
A	-	INITIAL RELEASE	-	-	-	-	-



INTERPRET IN GENERAL ACCORDANCE WITH ASME Y14.5		COLLIDER-ACCELERATOR DEPARTMENT BROOKHAVEN NATIONAL LABORATORY UPTON, N.Y. 11973	
UNLESS OTHERWISE SPECIFIED		DRAWN BY: S. TRABOCCHI 15/28/11	
DIMENSIONS ARE IN INCHES		CHECKED: [Signature] 2/6/11	
DECIMAL TOLERANCES		APPROVAL: [Signature] 2/6/11	
.XX ± .005		SUPERVISOR: [Signature] 2/11/11	
.XXX ± .015		DESIGNER: [Signature] 2/11/11	
ANGULAR TOLERANCE ±1°		CEE / CHE DIVISION: [Signature] 7/17	
BREAK SHARP EDGES		SHEET # OF SHEETS: 1 OF 2	
FINISH: 125		DEPARTMENT: [Signature]	
APPLICATION		SIZE: DRAWING NUMBER: 2550M0035	
G.A. CATEGORY: A3		SCALE: 1/1	
WEIGHT: 7.3		SHEET 1 OF 2	

DRAWING NO. 2550M0035

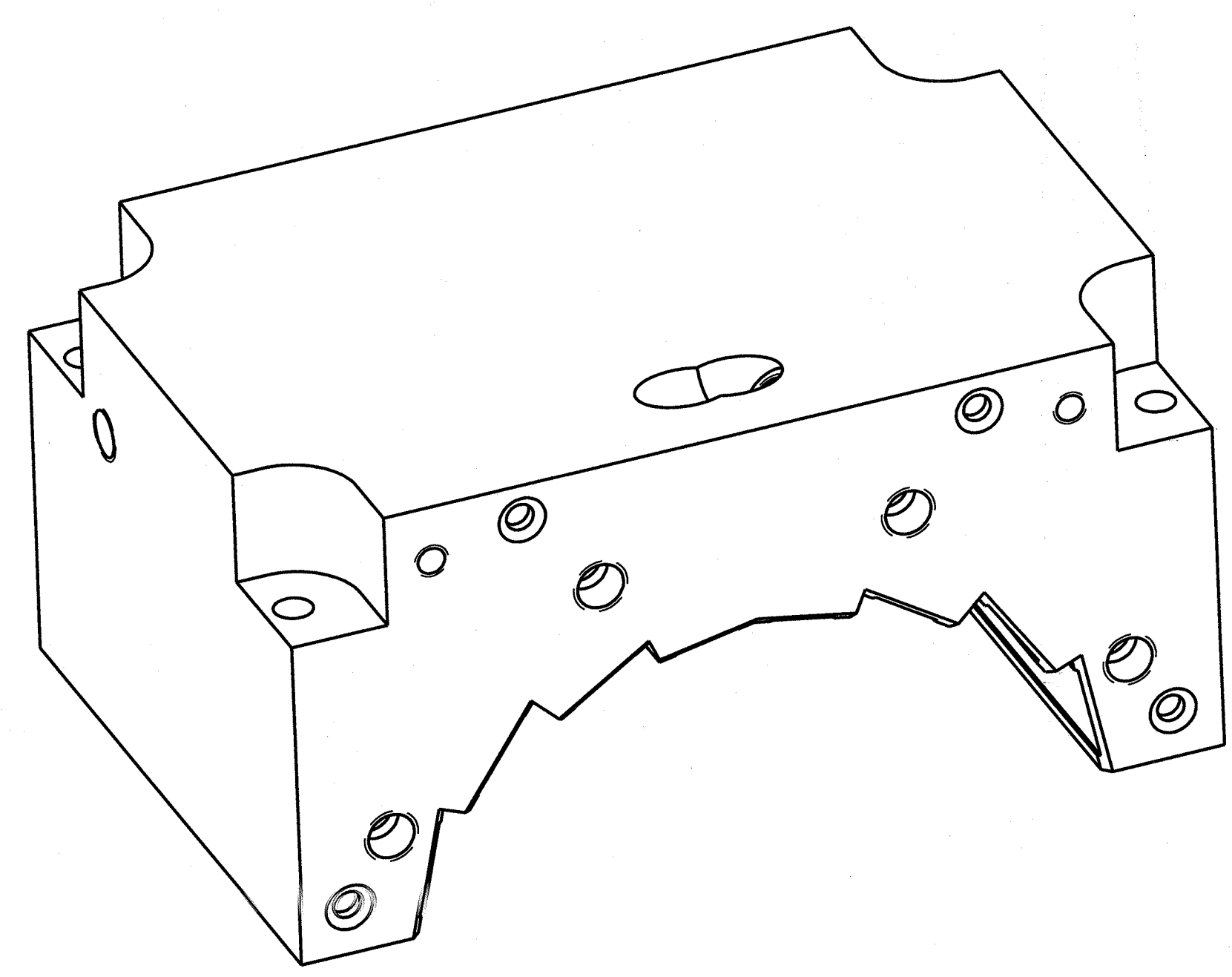
CREO



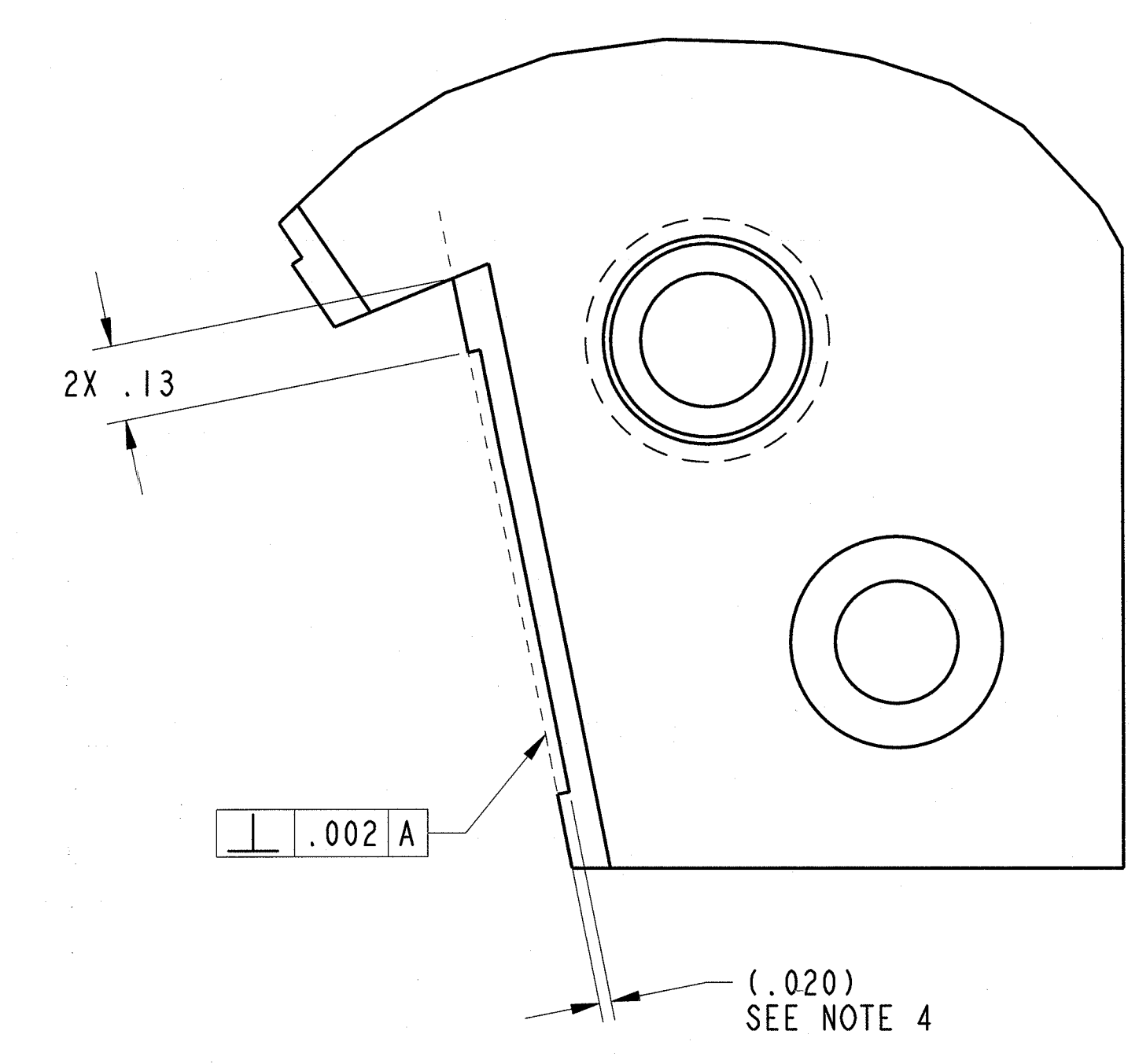
⊕ .002 A | B | C

POINT CHART - *SEE NOTE 3*

POINT NAME	X	Y
PT01	-2.556	0.000
PT02	-2.362	0.978
PT03	-2.168	0.898
PT04	-1.659	1.659
PT05	-1.455	1.455
PT06	-0.788	1.902
PT07	-0.715	1.726
PT08	0.000	1.868
PT09	0.715	1.726
PT10	0.788	1.902
PT11	1.455	1.455
PT12	1.659	1.659
PT13	2.168	0.898
PT14	2.362	0.978
PT15	2.556	0.000



ISOMETRIC VIEW
FOR REFERENCE ONLY
NO SCALE



DETAIL D
SCALE: 4/1
8X