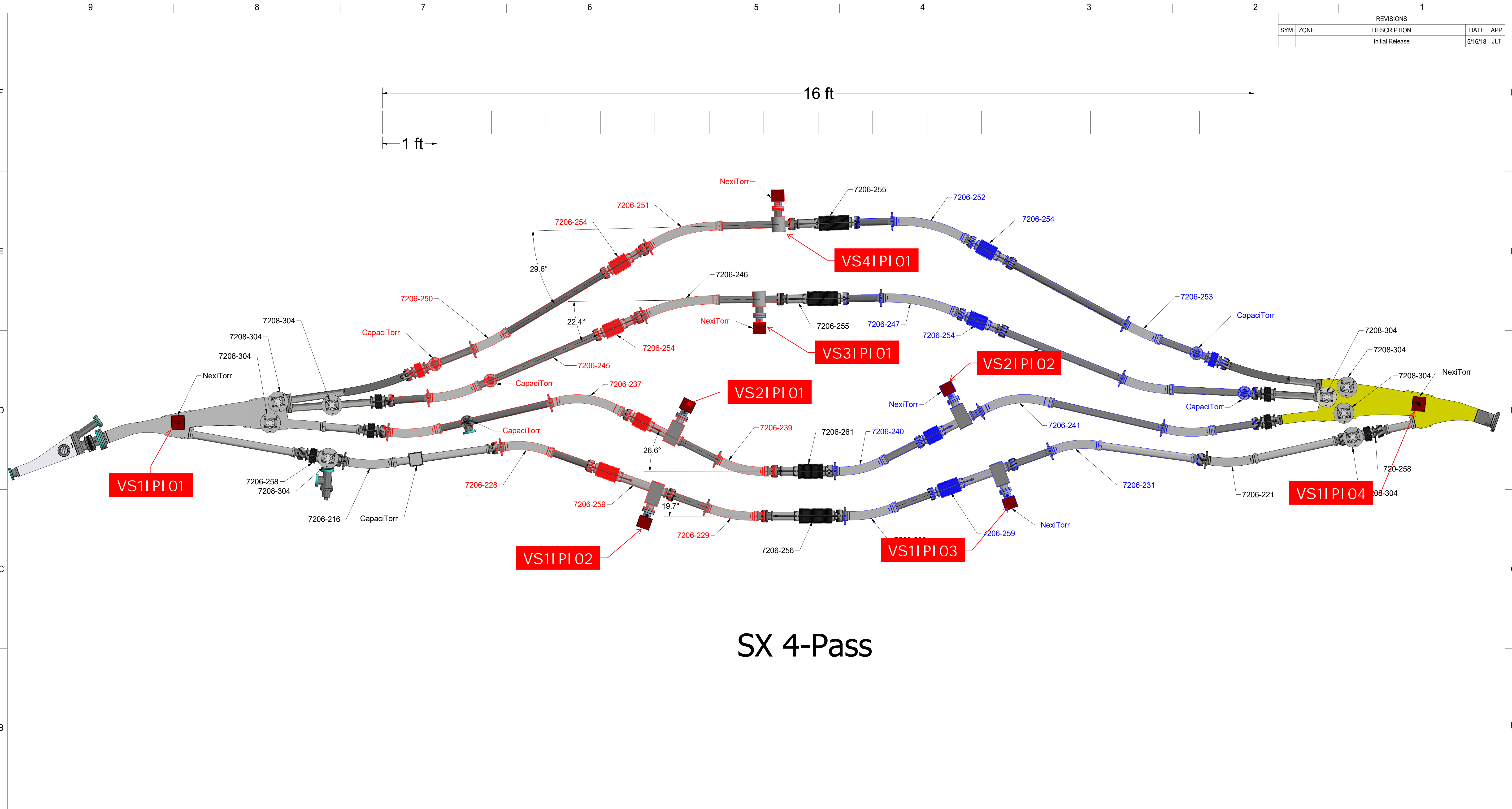
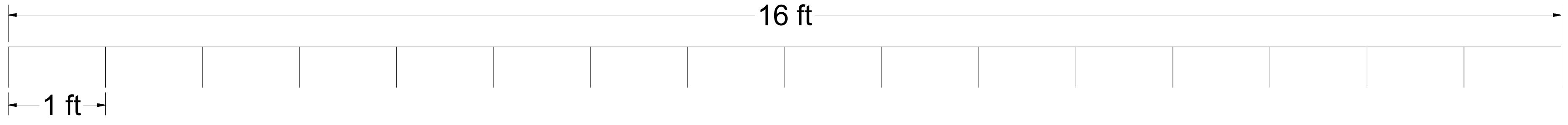


REVISIONS				
SYM	ZONE	DESCRIPTION	DATE	APP
		Initial Release	5/16/18	JLT



# SX 4-Pass

THESE DRAWINGS, WHICH CONTAIN PROPRIETARY INFORMATION, ARE THE PROPERTY OF CORNELL UNIVERSITY. USE OF THESE DRAWINGS BEYOND THE INTENDED PURPOSE IN SUPPORT OF OUR RESEARCH AS DESCRIBED AND FUNDED BY OUR SPONSORING AGENCIES MUST BE NEGOTIATED AND APPROVED IN ADVANCE BY CORNELL UNIVERSITY.

ITEM	DWG. NO.	DESCRIPTION	G1	G2	G3	REMARKS	REV.
			QUANTITY				
<b>D</b>	PRINT DISTR.	PLOT DATE: CAD FILE NAME: 7206-225.idw					
<b>7206-225</b>	CR-1	UNLESS OTHERWISE SPECIFIED: DIMENSIONS ARE IN MILLIMETERS. TOLERANCES ON: X ± .5 XX ± .2 XXX ± .1 ANGLES ± 0.5° ALL SURFACES $\sqrt{R}$	 Cornell Laboratory for Accelerator-based ScienceS and Education (CLASSE)				
		<b>Vacuum String from MLC to End of 4-Pass SX 4-Pass Assembly</b>					
	CHECKED BY:	DRAWN BY	DRAWN FOR	DATE	SCALE	<b>D</b>	<b>7206-225</b>
	APPROVED BY:	J.Turco	D.Burke	6/19/2018			SH. NO. 1 OF 3